

<u>PROJECT NAME:</u>	SNOW SLED BRIDGE I-395/ROUTE 9 CONNECTOR
<u>PROJECT LOCATION:</u>	BREWER – EDDINGTON, ME
<u>AGENCY/MUNICIPALITY:</u>	MEDOT
<u>PROJECT JOB NO:</u>	WIN 018915.50
<u>PREPARED FOR:</u>	STATE OF MAINE
<u>ENGINEER:</u>	MEDOT
<u>ENGINEER PROJ. NO:</u>	N/A
<u>JOB SPECIFICATIONS:</u>	SPECIAL PROVISION SECTION 534 PRECAST STRUCTURAL CONCRETE
<u>DRAWINGS:</u>	SNOW SLED BRIDGE SHEET 5 OF 7
<u>OTHER INFORMATION:</u>	N/A
<u>PREPARED BY:</u>	CONCRETE SYSTEMS INC.
<u>CSI JOB NO:</u>	C24548

DRAWING INDEX			
SHEET NO:	DESCRIPTION	REVISION NO.	REV. DATE
1	TITLE SHEET	1	09/17/2021
2	BOX CULVERT LAYOUT PLAN & SIDE ELEVATIONS	1	09/17/2021
3	CULVERT END ELEVATION & TYPICAL END SECTION	1	09/17/2021
4	CULVERT TYPICAL DETAILS	0	08/18/2021
5	INDIVIDUAL PIECE SHOP DRAWING C1	1	09/17/2021
6	INDIVIDUAL PIECE SHOP DRAWING C2	1	09/17/2021
7	INDIVIDUAL PIECE SHOP DRAWING C3	1	09/17/2021
8	INDIVIDUAL PIECE SHOP DRAWING C4	1	09/17/2021

DRAWING INDEX			
SHEET NO:	DESCRIPTION	REVISION NO.	REV. DATE
9	INDIVIDUAL PIECE SHOP DRAWING C5	1	09/17/2021
10	INDIVIDUAL PIECE SHOP DRAWING C6	1	09/17/2021
11	INDIVIDUAL PIECE SHOP DRAWING C7	1	09/17/2021
12	INDIVIDUAL PIECE SHOP DRAWING C8	1	09/17/2021
13	INDIVIDUAL PIECE SHOP DRAWING C9	1	09/17/2021
14	INDIVIDUAL PIECE SHOP DRAWING C10	1	09/17/2021
15	INDIVIDUAL PIECE SHOP DRAWING C11	1	09/17/2021
16	INDIVIDUAL PIECE SHOP DRAWING C12	1	09/17/2021

Contractor is to verify that all information shown on drawings has been thoroughly checked, complies with the contract documents and is adequate to meet the firm's obligations. Some omissions and details may differ slightly from contract drawings to accommodate the manufacturing or design process. Approval of this drawing indicates that any deviation from the contract documents has been reviewed and found to be acceptable. Production will not commence until receipt of signed, approved shop drawings.

This drawing contains information proprietary to CONCRETE SYSTEMS, INC. This drawing is disclosed with the understanding that it will be retained in confidence and its use limited solely to the purpose for which it is disclosed. It is understood that no reproduction of this drawing is authorized without permission from CONCRETE SYSTEMS, INC. and that it will be returned to CONCRETE SYSTEMS, INC. upon request.




9 Commercial Street, Hudson, New Hampshire 03051  
(800) 342-3374 (603) 889-4163  
FAX (603) 889-0039 [www.csigroup.com](http://www.csigroup.com)

Stamp for structural  
design of precast only

<b>STATE OF MAINE</b> <b>DEPARTMENT OF TRANSPORTATION</b>	
<input checked="" type="checkbox"/> REVIEWED	<input type="checkbox"/> REVIEWED WITH COMMENTS
<input type="checkbox"/> REJECTED	<input type="checkbox"/> REVISE AND RESUBMIT

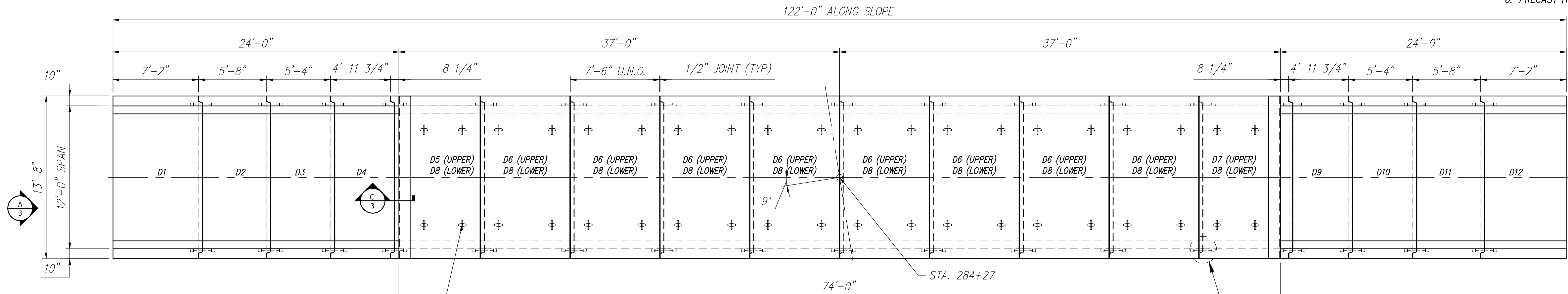
Sep 22, 2021

  
 \_\_\_\_\_  
 NAME

Transportation Engineer II  
 \_\_\_\_\_  
 TITLE

FEDERAL AID PROJECT NO. 1891500

- CULVERT GENERAL NOTES:
- REFERENCE STANDARDS:  
AASHTO "LRFD BRIDGE DESIGN SPECIFICATIONS"  
ASTM C1577
  - DESIGN PARAMETERS:  
LIVE LOAD: HI-93 MAINE MODIFIED  
CONSTRUCTION LOAD HS20 WITH 18" EARTH COVER  
EARTH COVER: 5.39' TO 6.66'±  
CONCRETE: DESIGN STRENGTH F'C = 5000 PSI  
UNIT WEIGHT = 150 PCF  
3 GAL/CY CORROSION INHIBITOR  
REINFORCING: ASTM A615 (REBAR), GRADE 60, BLACK  
SOIL: UNIT WEIGHT = 120 PCF  
MINIMUM LATERAL PRESSURE = 30 PCF  
MAXIMUM LATERAL PRESSURE = 60 PCF  
COVER TO REINFORCING: 2" OUTSIDE  
1 1/2" INSIDE
  - DIMENSIONS INCLUDE A 1/2" JOINT CREEP. OVERALL CULVERT LENGTH WILL VARY SLIGHTLY DEPENDING ON INSTALLATION.
  - CONCRETE SEALER SUPPLIED & APPLIED BY CSI. CONCRETE SEALER APPLIED ON TOP AND SIDES OF STRUCTURE TO BE CERTI-VEX PENSEAL 244-100%.
  - DBS ARE DOWEL BAR SPlicERS AND DI ARE DOWEL INS. DBS ARE SUPPLIED BY CSI AND DI SUPPLIED BY OTHERS.
  - PRECAST HEADWALLS NOT DESIGNED FOR IMPACT LOAD.



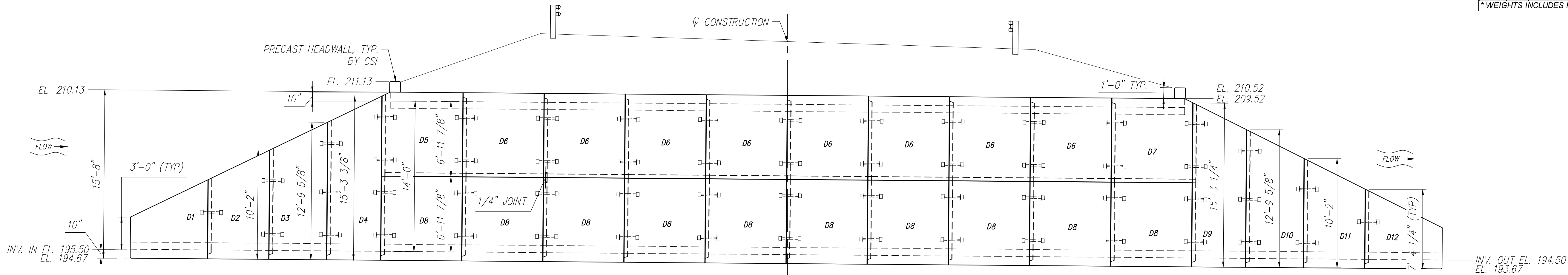
LUA86G UTILITY ANCHOR, GALV.  
TYP., 4 PLACES, EACH PIECE  
SEE CULVERT LIFTING HARDWARE  
SHEET 4

PLAN VIEW  
Scale: 3/16" = 1'-0"

PERMANENT CONNECTION HARDWARE  
SEE CONNECTION HARDWARE  
SHEET 4

BEGIN CULVERT  
INSTALLATION  
AT THIS END

PIECE SCHEDULE (MK-FA5000SC30)				
MARK	QTY	LENGTH	YDS	WEIGHT
D1	1	7.17'	5.41	10.95 TONS
D2	1	5.67'	5.26	10.65 TONS
D3	1	5.33'	5.84	11.83 TONS
D4	1	4.97'	6.25	12.66 TONS
D5*	1	7.50'	6.73	13.63 TONS
D6*	8	7.50'	6.65	13.47 TONS
D7*	1	7.50'	6.73	13.63 TONS
D8	10	7.50'	6.65	13.47 TONS
D9	1	4.97'	6.25	12.66 TONS
D10	1	5.33'	5.84	11.83 TONS
D11	1	5.67'	5.26	10.65 TONS
D12	1	7.17'	5.07	10.28 TONS
* WEIGHTS INCLUDES HEADWALL				

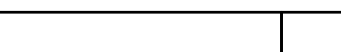


ELEVATION  
Scale: 3/16" = 1'-0"

STATE OF MAINE DEPARTMENT OF TRANSPORTATION	
<input checked="" type="checkbox"/> REVIEWED	<input type="checkbox"/> REVIEWED WITH COMMENTS
<input type="checkbox"/> REJECTED	<input type="checkbox"/> REVISE AND RESUBMIT
Sep 22, 2021	
THIS DOCUMENT WAS REVIEWED IN ACCORDANCE WITH STATE OF MAINE SPECIFICATION SECTION 105.3 WORKING DRAWINGS	
<i>James H. Hennessey</i>	Transportation Engineer II
NAME	TITLE

Contractor is to verify that all information shown on drawings has been thoroughly checked, complies with the contract documents and is adequate to meet the field conditions. Some dimensions and details may differ slightly from contract drawings to accommodate the manufacturing or design process. Approval of this drawing indicates that any deviation from the contract documents has been reviewed and found to be acceptable. Production will not commence until receipt of signed, approved shop drawings.	10 9 8 7 6 5 4 3 2 1 Rev.	Date	DESCRIPTION	By	This drawing is based upon information provided from the following documents and/or sources: Engineer: MEDOT Project No: N/A Drawings: SNOW SLED BRIDGE SHEET 5 OF 7 Specifications: SPECIAL PROVISION SECTION 534 Other Sources: N/A	Concrete Systems Inc. 9 Commercial St., Hudson, NH 03051 Phone 603-889-4163 Fax 603-889-2417	STATE AGENCY MEDOT		FEDERAL AID PROJECT NO. 1891500				
							STATE OF MAINE SNOW SLED BRIDGE BREWER - EDDINGTON, ME		CULVERT LAYOUT PLAN & SIDE ELEVATION C24548-LO4		REV 1		
This drawing contains information proprietary to CONCRETE SYSTEMS, INC. This drawing is disclosed with the understanding that it will be retained in confidence and its use limited solely to the purpose for which it is disclosed. It is understood that no reproduction of this drawing is authorized without permission from CONCRETE SYSTEMS, INC. and that it will be returned to CONCRETE SYSTEMS, INC. upon request.	09/15/2021		REVISED PIECE SCHEDULE & REMOVE TOE WALLS	YAA			Drawn By YAA	Date 05/21/2021	D	Drawing No.	Quantity: —	Project No: WIN 018915.50	SHEET 2 OF 16

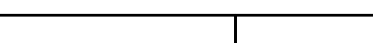


<p>Contractor is to verify that all information shown on drawings has been thoroughly checked, complies with the contract documents and is adequate to meet the field conditions. Some dimensions and details may differ slightly from contract drawings to accommodate the manufacturing or design process. Approval of this drawing indicates that any deviation from the contract documents has been reviewed and found to be acceptable. Production will not commence until receipt of signed, approved shop drawings.</p> <p>This drawing contains information proprietary to CONCRETE SYSTEMS, INC. This drawing is disclosed with the understanding that it will be retained in confidence and its use limited solely to the purpose for which it is disclosed. It is understood that no reproduction of this drawing is authorized without permission from CONCRETE SYSTEMS, INC. and that it will be returned to CONCRETE SYSTEMS, INC. upon request.</p>	10					<p>This drawing is based upon information provided from the following documents and/or sources:</p> <p>Engineer: MEDOT Project No: N/A Drawings: SNOW SLED BRIDGE SHEET 5 OF 7</p> <p>Specifications: SPECIAL PROVISION SECTION 534 PRECAST STRUCTURAL CONCRETE</p> <p>Other Sources: N/A</p>	 <p>Concrete Systems Inc. 9 Commercial St., Hudson, NH 03051 Phone 603-889-4163 Fax 603-889-2417</p>	STATE AGENCY		FEDERAL AID PROJECT NO. 1891500			
	9							MEDOT		STATE OF MAINE SNOW SLED BRIDGE BREWER - EDDINGTON, ME			
	8							Drawn By YAA	Date 05/21/2021	D	CULVERT END ELEVATION & TYPICAL END SECTION		REV 1
	7							Reviewed By YAA	Date 08/18/2021		Drawing No. C24548-ELE1		
	6							Approved By	Date		Quantity: — Project No: WIN 018915.50		
	5												
	4												
	3												
	2												
	1	09/15/2021	REMOVE TOE WALL DETAIL & ADD ADD'L REINFORCING AT HAUNCHES	YAA									
Rev.	Date	DESCRIPTION	By										
REVISIONS													





<p>Contractor is to verify that all information shown on drawings has been thoroughly checked, complies with the contract documents and is adequate to meet the field conditions. Some dimensions and details may differ slightly from contract drawings to accommodate the manufacturing or design process. Approval of this drawing indicates that any deviation from the contract documents has been reviewed and found to be acceptable. Production will not commence until receipt of signed, approved shop drawings.</p> <p>This drawing contains information proprietary to CONCRETE SYSTEMS, INC. This drawing is disclosed with the understanding that it will be retained in confidence and its use limited solely to the purpose for which it is disclosed. It is understood that no reproduction of this drawing is authorized without permission from CONCRETE SYSTEMS, INC. and that it will be returned to CONCRETE SYSTEMS, INC. upon request.</p>	10					
	9					
	8					
	7					
	6					
	5					
	4					
	3					
	2					
	1					
Rev.	Date	DESCRIPTION			By	
REVISIONS						

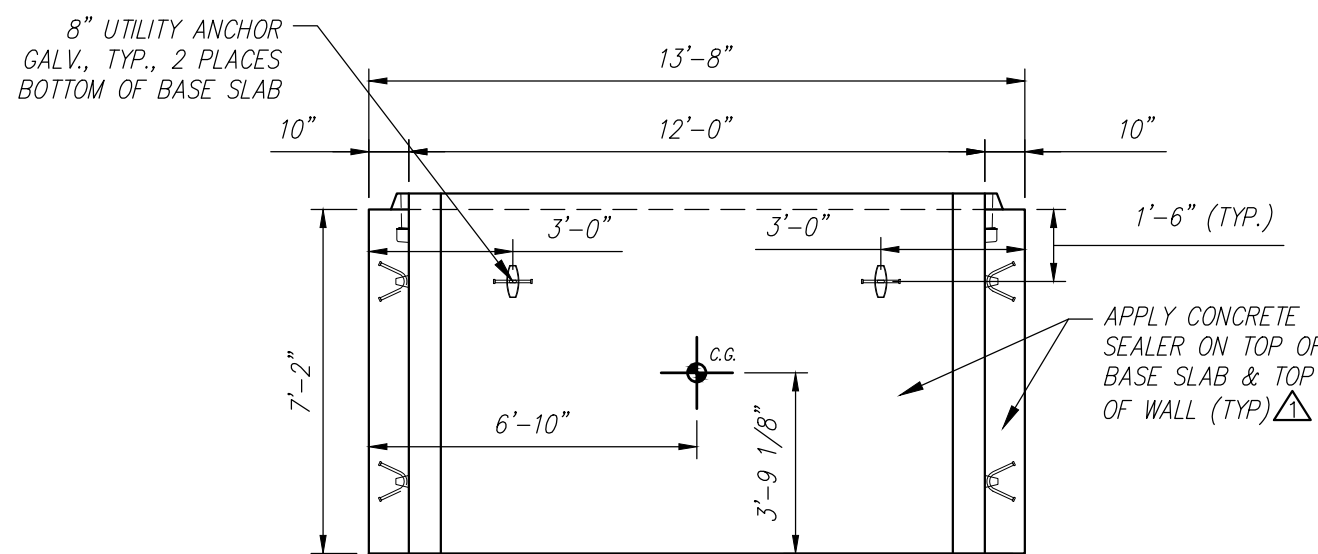
This drawing is based upon information provided from the following documents and/or sources:  Engineer: MEDOT Project No: N/A Drawings: SNOW SLED BRIDGE SHEET 5 OF 7  Specifications: SPECIAL PROVISION SECTION 534 PRECAST STRUCTURAL CONCRETE  Other Sources: N/A		 <p>Concrete Systems Inc. 9 Commercial St., Hudson, NH 03051 Phone 603-889-4163 Fax 603-889-2417</p>	STATE AGENCY  MEDOT		STATE OF MAINE SNOW SLED BRIDGE BREWER - EDDINGTON, ME	
Drawn By: YAA Date: 05/21/2021 Reviewed By: YAA Date: 08/18/2021 Approved By: _____ Date: _____			D	CULVERT TYPICAL DETAILS Drawing No. C24548-DET1		REV 0
Quantity: —		Project No: WIN 018915.50		SHEET 4 OF 16		

FEDERAL AID PROJECT NO. 1891500

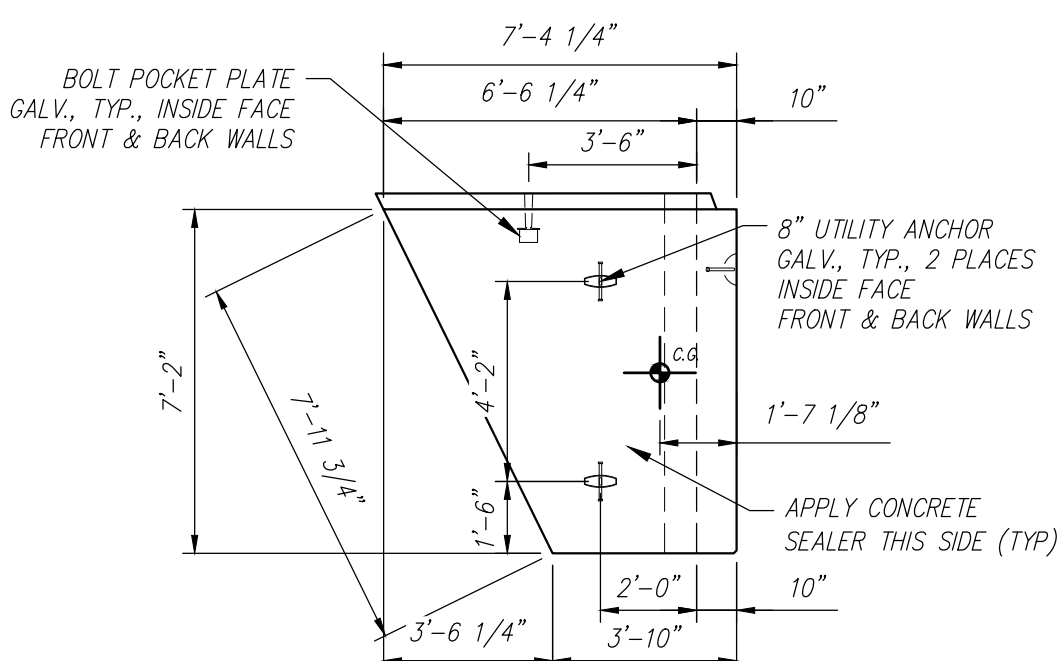


D1 - BILL OF MATERIALS / EMBEDS				
CSI ID#	DESCRIPTION	QTY	UM	COMMENTS
DTJ	CERTI-VEX PENSEAL 244-100%	1.3	GA	
EM-00125	BOLT POCKET PLATES (GALVANIZED)	2	EA	
EM-00033	3" FOAM CORE PVC	5.83	FT	
EM-00115	8" UTILITY ANCHOR - GALVANIZED	6	EA	
RM-00015	REBAR #5 BLACK-GR 60 40'	44	LB	
RM-00017	REBAR #6 BLACK-GR 60 40'	511	LB	
RM-00098	WIRE MESH ALL SIZES	625	LB	TOTAL WEIGHT
MK-FA5000SC30	MIX DESIGN - FLY ASH 5000 SELF COMPACTIN	5.41	CY	

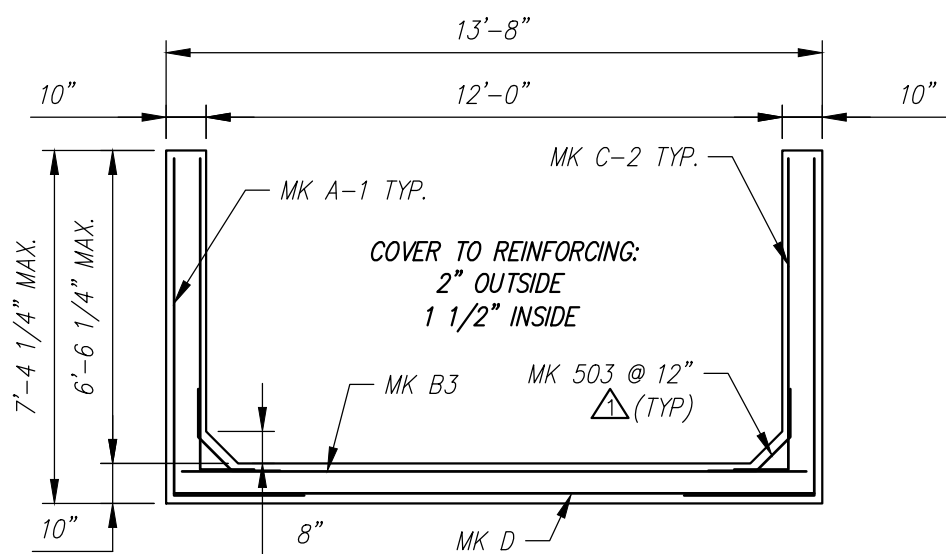
Rebar Schedule		
MK	QTY	LENGTH
503 #5	14	3'-0"
601 #6	34	10'-0" MAX.



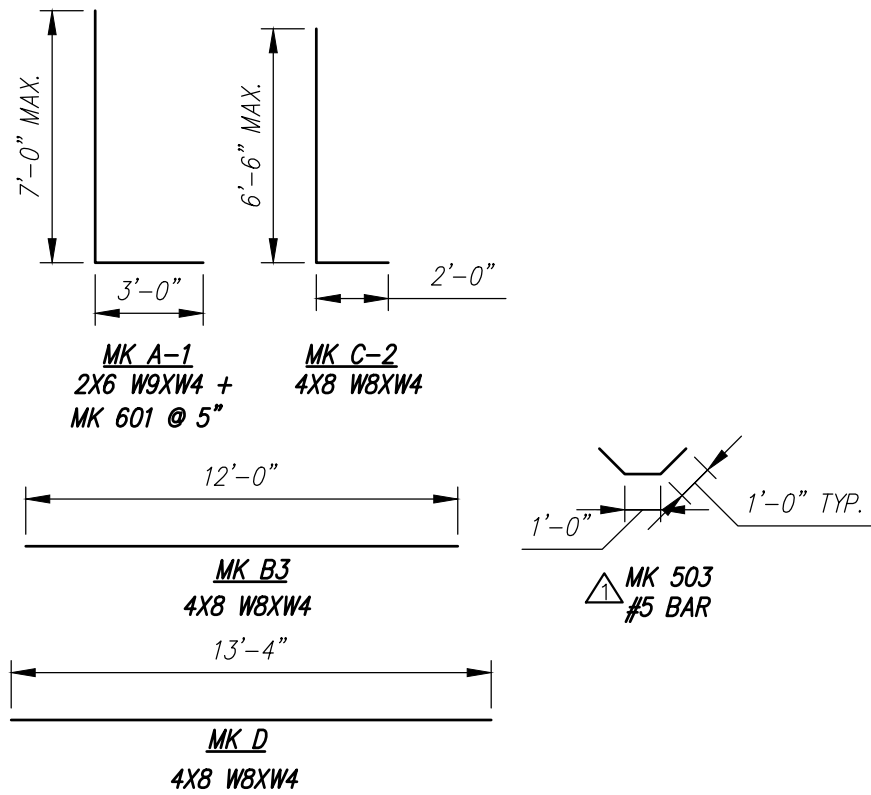
PLAN VIEW  
Scale: 1/4" = 1'-0"



SIDE VIEW  
Scale: 1/4" = 1'-0"



REINFORCING DETAIL  
Scale: 1/4" = 1'-0"



BENDING SCHEDULE  
Scale: N.T.S.

STATE OF MAINE	
DEPARTMENT OF TRANSPORTATION	
<input checked="" type="checkbox"/> REVIEWED	<input type="checkbox"/> REVIEWED WITH COMMENTS
<input type="checkbox"/> REJECTED	<input type="checkbox"/> REVISE AND RESUBMIT
Sep 22, 2021	
THIS DOCUMENT WAS REVIEWED IN ACCORDANCE WITH STATE OF MAINE SPECIFICATION SECTION 105.7 WORKING DRAWINGS	
<u>James H. Hennessey</u>	Transportation Engineer II
NAME	TITLE

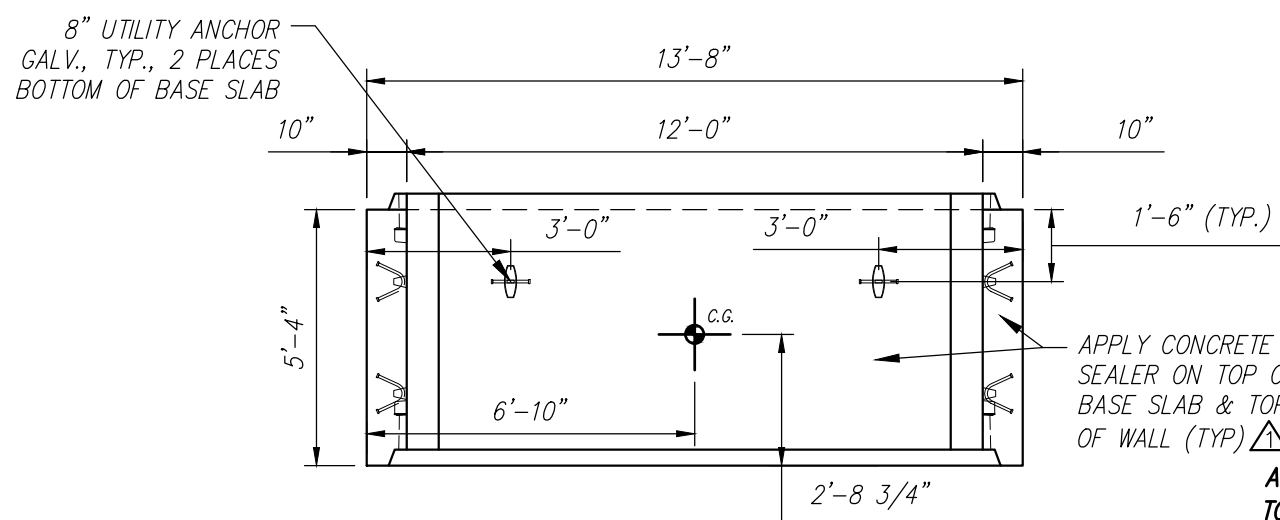
Contractor is to verify that all information shown on drawings has been thoroughly checked, complies with the contract documents and is adequate to meet the field conditions. Some dimensions and details may differ slightly from contract drawings to accommodate the manufacturing or design process. Approval of this drawing indicates that any deviation from the contract documents has been reviewed and found to be acceptable. Production will not commence until receipt of signed, approved shop drawings.		10																																																																																																																																																																																																																																																																																																																																																																																																																																																																																																																																																																																																																																																																																																																																																																																																																																																																																																																																																																																																																																																																																																																																																																																																																																																																																																																																																																																																																																																		
---	--	----	--	--	--	--	--	--	--	--	--	--	--	--	--	--	--	--	--	--	--	--	--	--	--	--	--	--	--	--	--	--	--	--	--	--	--	--	--	--	--	--	--	--	--	--	--	--	--	--	--	--	--	--	--	--	--	--	--	--	--	--	--	--	--	--	--	--	--	--	--	--	--	--	--	--	--	--	--	--	--	--	--	--	--	--	--	--	--	--	--	--	--	--	--	--	--	--	--	--	--	--	--	--	--	--	--	--	--	--	--	--	--	--	--	--	--	--	--	--	--	--	--	--	--	--	--	--	--	--	--	--	--	--	--	--	--	--	--	--	--	--	--	--	--	--	--	--	--	--	--	--	--	--	--	--	--	--	--	--	--	--	--	--	--	--	--	--	--	--	--	--	--	--	--	--	--	--	--	--	--	--	--	--	--	--	--	--	--	--	--	--	--	--	--	--	--	--	--	--	--	--	--	--	--	--	--	--	--	--	--	--	--	--	--	--	--	--	--	--	--	--	--	--	--	--	--	--	--	--	--	--	--	--	--	--	--	--	--	--	--	--	--	--	--	--	--	--	--	--	--	--	--	--	--	--	--	--	--	--	--	--	--	--	--	--	--	--	--	--	--	--	--	--	--	--	--	--	--	--	--	--	--	--	--	--	--	--	--	--	--	--	--	--	--	--	--	--	--	--	--	--	--	--	--	--	--	--	--	--	--	--	--	--	--	--	--	--	--	--	--	--	--	--	--	--	--	--	--	--	--	--	--	--	--	--	--	--	--	--	--	--	--	--	--	--	--	--	--	--	--	--	--	--	--	--	--	--	--	--	--	--	--	--	--	--	--	--	--	--	--	--	--	--	--	--	--	--	--	--	--	--	--	--	--	--	--	--	--	--	--	--	--	--	--	--	--	--	--	--	--	--	--	--	--	--	--	--	--	--	--	--	--	--	--	--	--	--	--	--	--	--	--	--	--	--	--	--	--	--	--	--	--	--	--	--	--	--	--	--	--	--	--	--	--	--	--	--	--	--	--	--	--	--	--	--	--	--	--	--	--	--	--	--	--	--	--	--	--	--	--	--	--	--	--	--	--	--	--	--	--	--	--	--	--	--	--	--	--	--	--	--	--	--	--	--	--	--	--	--	--	--	--	--	--	--	--	--	--	--	--	--	--	--	--	--	--	--	--	--	--	--	--	--	--	--	--	--	--	--	--	--	--	--	--	--	--	--	--	--	--	--	--	--	--	--	--	--	--	--	--	--	--	--	--	--	--	--	--	--	--	--	--	--	--	--	--	--	--	--	--	--	--	--	--	--	--	--	--	--	--	--	--	--	--	--	--	--	--	--	--	--	--	--	--	--	--	--	--	--	--	--	--	--	--	--	--	--	--	--	--	--	--	--	--	--	--	--	--	--	--	--	--	--	--	--	--	--	--	--	--	--	--	--	--	--	--	--	--	--	--	--	--	--	--	--	--	--	--	--	--	--	--	--	--	--	--	--	--	--	--	--	--	--	--	--	--	--	--	--	--	--	--	--	--	--	--	--	--	--	--	--	--	--	--	--	--	--	--	--	--	--	--	--	--	--	--	--	--	--	--	--	--	--	--	--	--	--	--	--	--	--	--	--	--	--	--	--	--	--	--	--	--	--	--	--	--	--	--	--	--	--	--	--	--	--	--	--	--	--	--	--	--	--	--	--	--	--	--	--	--	--	--	--	--	--	--	--	--	--	--	--	--	--	--	--	--	--	--	--	--	--	--	--	--	--	--	--	--	--	--	--	--	--	--	--	--	--	--	--	--	--	--	--	--	--	--	--	--	--	--	--	--	--	--	--	--	--	--	--	--	--	--	--	--	--	--	--	--	--	--	--	--	--	--	--	--	--	--	--	--	--	--	--	--	--	--	--	--	--	--	--	--	--	--	--	--	--	--	--	--	--	--	--	--	--	--	--	--	--	--	--	--	--	--	--	--	--	--	--	--	--	--	--	--	--	--	--	--	--	--	--	--	--	--	--	--	--	--	--	--	--	--	--	--	--	--	--	--	--	--	--	--	--	--	--	--	--	--	--	--	--	--	--	--	--	--	--	--	--	--	--	--	--	--	--	--	--	--	--	--	--	--	--	--	--	--	--	--	--	--	--	--	--	--	--	--	--	--	--	--	--	--	--	--	--	--	--	--	--	--	--	--	--	--	--	--	--	--	--	--	--	--	--	--	--	--	--	--	--	--	--	--	--	--	--	--	--	--	--	--	--	--	--	--	--	--	--	--	--	--	--	--	--	--	--	--	--	--	--	--	--	--	--	--	--	--	--	--	--	--	--	--	--	--	--	--	--	--	--	--	--	--	--	--	--	--	--	--	--	--	--	--	--	--	--	--	--	--	--	--	--	--	--	--	--	--	--	--	--	--	--	--	--	--	--	--	--	--	--	--	--	--	--	--	--	--	--	--	--	--	--	--	--	--	--	--	--	--	--	--	--	--	--	--	--	--	--	--	--	--	--	--	--	--	--	--	--	--	--	--	--	--	--	--	--	--	--	--	--	--	--	--	--	--	--	--	--	--	--	--	--	--	--	--	--	--	--	--	--	--	--	--	--	--	--	--	--	--	--	--	--	--	--	--	--	--	--	--	--	--	--	--	--	--	--	--	--	--	--	--	--	--	--	--	--	--	--	--	--	--	--	--	--	--	--	--	--	--	--	--	--	--	--	--	--	--	--	--	--	--	--	--	--	--	--	--	--	--	--	--	--	--	--	--	--	--	--	--	--	--	--	--	--	--	--	--	--	--	--	--	--	--	--	--	--	--	--	--	--	--	--	--	--	--	--	--	--	--	--	--	--	--	--	--	--	--	--	--	--	--	--	--	--	--	--	--	--	--	--	--	--	--	--	--	--	--	--	--	--	--	--	--	--	--	--	--	--	--	--	--	--	--	--	--	--	--	--	--	--	--	--	--	--	--	--	--	--	--	--	--	--	--	--	--	--	--	--	--	--	--	--	--	--	--	--	--	--	--	--	--	--	--	--	--	--	--	--	--	--	--	--	--	--	--	--	--	--	--	--	--	--	--	--	--	--	--	--	--	--	--	--	--	--	--	--	--	--	--	--	--	--	--	--	--	--	--	--	--	--	--	--	--	--	--	--	--	--	--	--	--	--	--	--	--	--

Rebar Schedule					
MK		QTY	LENGTH		
503	#5	12	3'	0"	
602	#6	26	12'	10"	MAX.

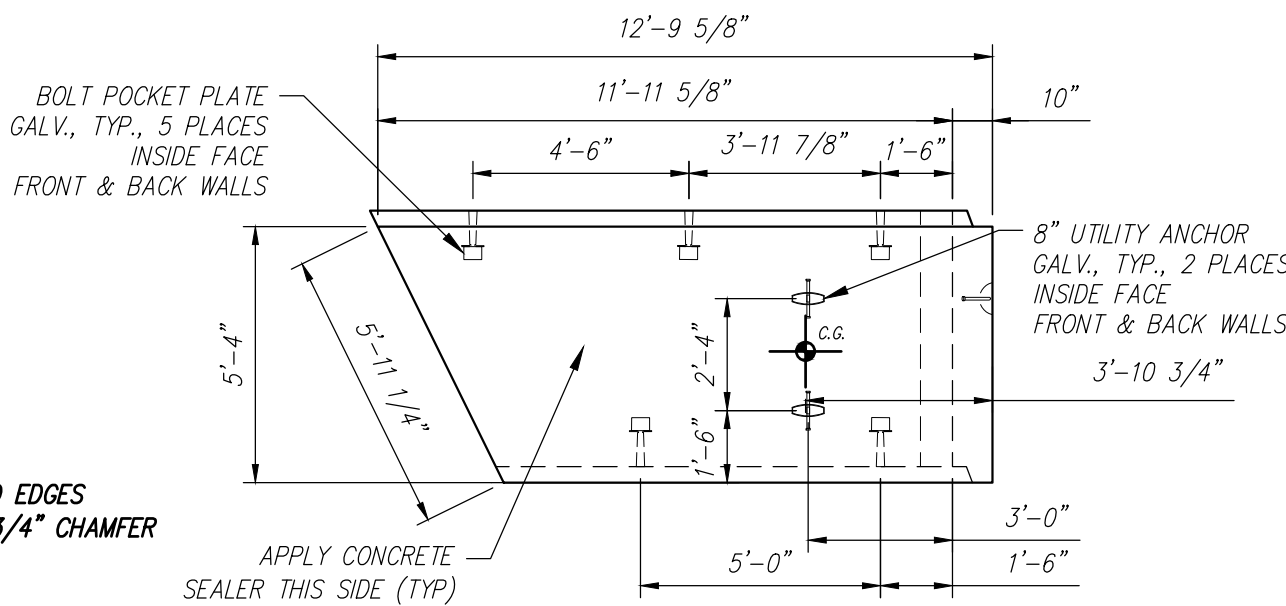
[illegible]

D3 - BILL OF MATERIALS / EMBEDS				
CSI ID#	DESCRIPTION	QTY	UM	COMMENTS
DTJ	CERTI-VEX PENSEAL 244-100%	1.4	GA	
EM-00125	BOLT POCKET PLATES (GALVANIZED)	10	EA	
EM-00115	8" UTILITY ANCHOR - GALVANIZED	6	EA	
JS-00002	1"X1" CLOSED NEOP GASKET	34	FT	AROUND BELL
RM-00015	REBAR #5 BLACK-GR 60 40'	38	LB	
RM-00017	REBAR #6 BLACK-GR 60 40'	556	LB	
RM-00098	WIRE MESH ALL SIZES	875	LB	TOTAL WEIGHT
MX-FA5000SC30	MIX DESIGN - FLY ASH 5000 SELF COMPACTIN	5.84	CY	

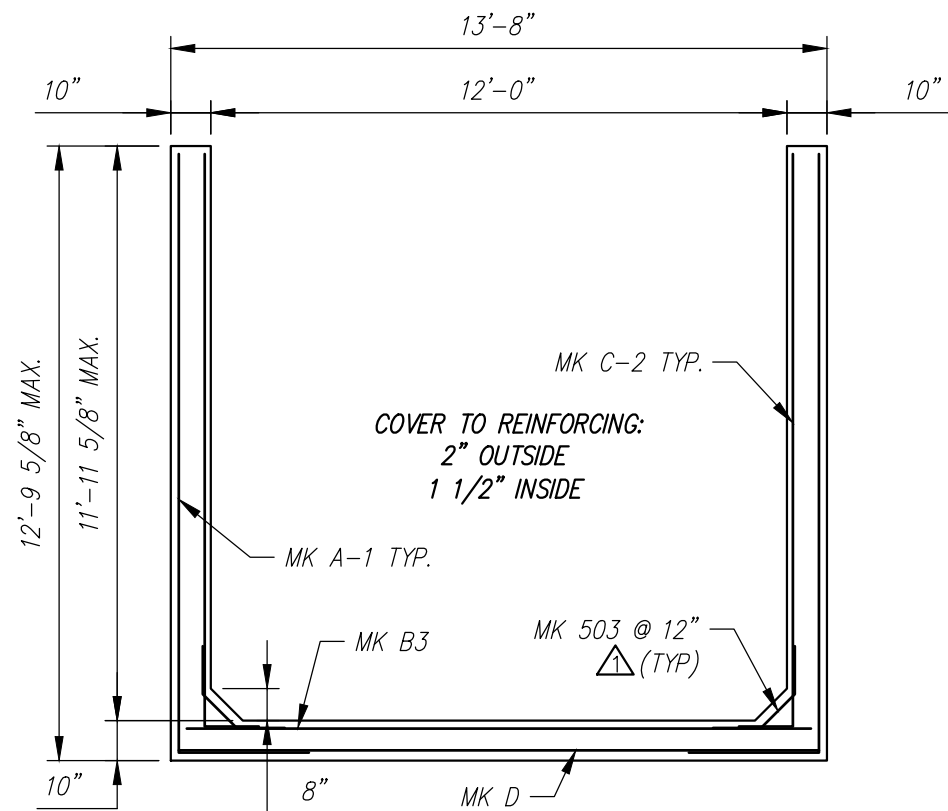
Rebar Schedule		
MK	QTY	LENGTH
503 #5	12	3'-0"
603 #6	24	15'-5" MAX.



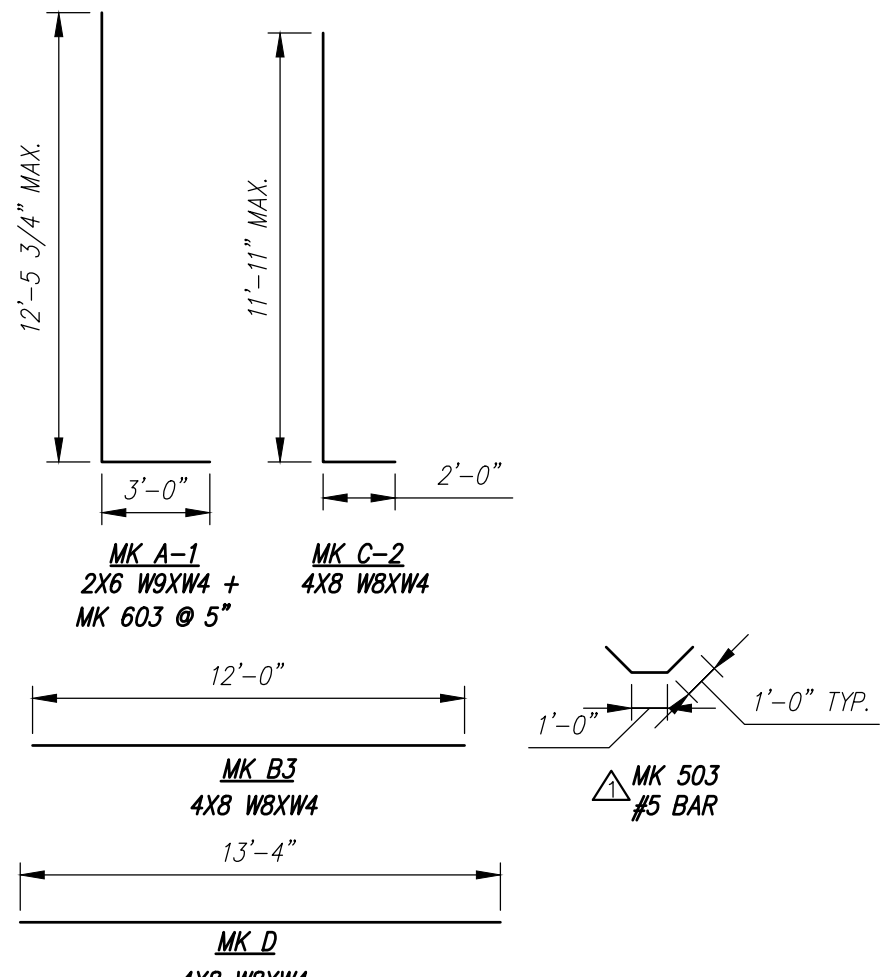
PLAN VIEW  
Scale: 1/4" = 1'-0"



SIDE VIEW  
Scale: 1/4" = 1'-0"




REINFORCING DETAIL  
Scale: 1/4" = 1'-0"



BENDING SCHEDULE  
Scale: N.T.S.

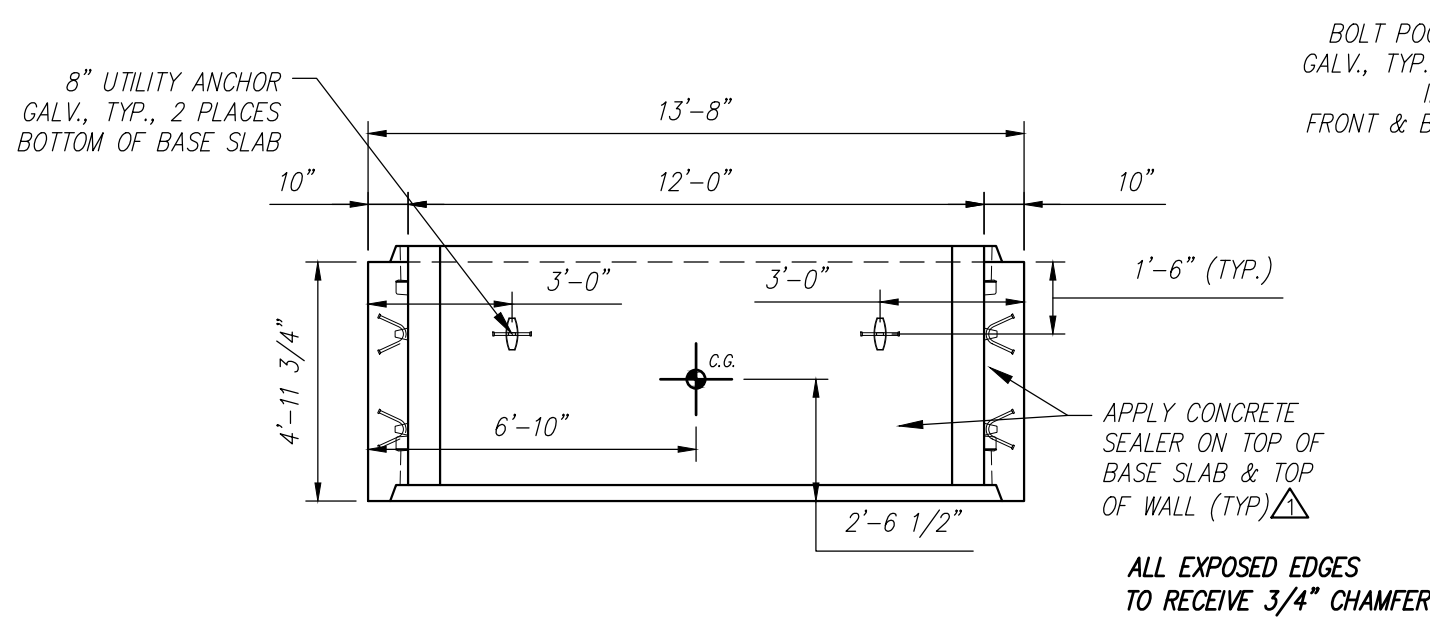
STATE OF MAINE DEPARTMENT OF TRANSPORTATION	
<input checked="" type="checkbox"/> REVIEWED	<input type="checkbox"/> REVIEWED WITH COMMENTS
<input type="checkbox"/> REJECTED	<input type="checkbox"/> REVISE AND RESUBMIT
Sep 22, 2021	
THIS DOCUMENT WAS REVIEWED IN ACCORDANCE WITH STATE OF MAINE SPECIFICATION SECTION 105.7 WORKING DRAWINGS	
NAME	TITLE

Contractor is to verify that all information shown on drawings has been thoroughly checked, complies with the contract documents and is adequate to meet the field conditions. Some dimensions and details may differ slightly from contract drawings to accommodate the manufacturing or design process. Approval of this drawing indicates that any deviation from the contract documents has been reviewed and found to be acceptable. Production will not commence until receipt of signed, approved shop drawings.		10				This drawing is based upon information provided from the following documents and/or sources:  Engineer: MEDOT Project No: N/A Drawings: SNOW SLED BRIDGE SHEET 5 OF 7 Specifications: SPECIAL PROVISION SECTION 534 PRECAST STRUCTURAL CONCRETE Other Sources: N/A	 Concrete Systems Inc. 9 Commercial St., Hudson, NH, 03051 Phone 603-889-4163 Fax 603-889-2417	STATE AGENCY		FEDERAL AID PROJECT NO. 1891500			
		9						MEDOT	STATE OF MAINE SNOW SLED BRIDGE BREWER — EDDINGTON, ME				
		8							Drawing No. INDIVIDUAL PIECE SHOP DRAWING D3	D	Drawing No. C24548-D3	REV 1	
		7											
		6											
		5											
		4											
		3											
		2											
		1	09/15/2021	REVISED REINFORCING	YAA								
This drawing contains information proprietary to CONCRETE SYSTEMS, INC. This drawing is disclosed with the understanding that it will be retained in confidence and its use limited solely to the purpose for which it is disclosed. It is understood that no reproduction of this drawing is authorized without permission from CONCRETE SYSTEMS, INC. and that it will be returned to CONCRETE SYSTEMS, INC. upon request.		Rev.	Date	DESCRIPTION	By								
				REVISIONS									

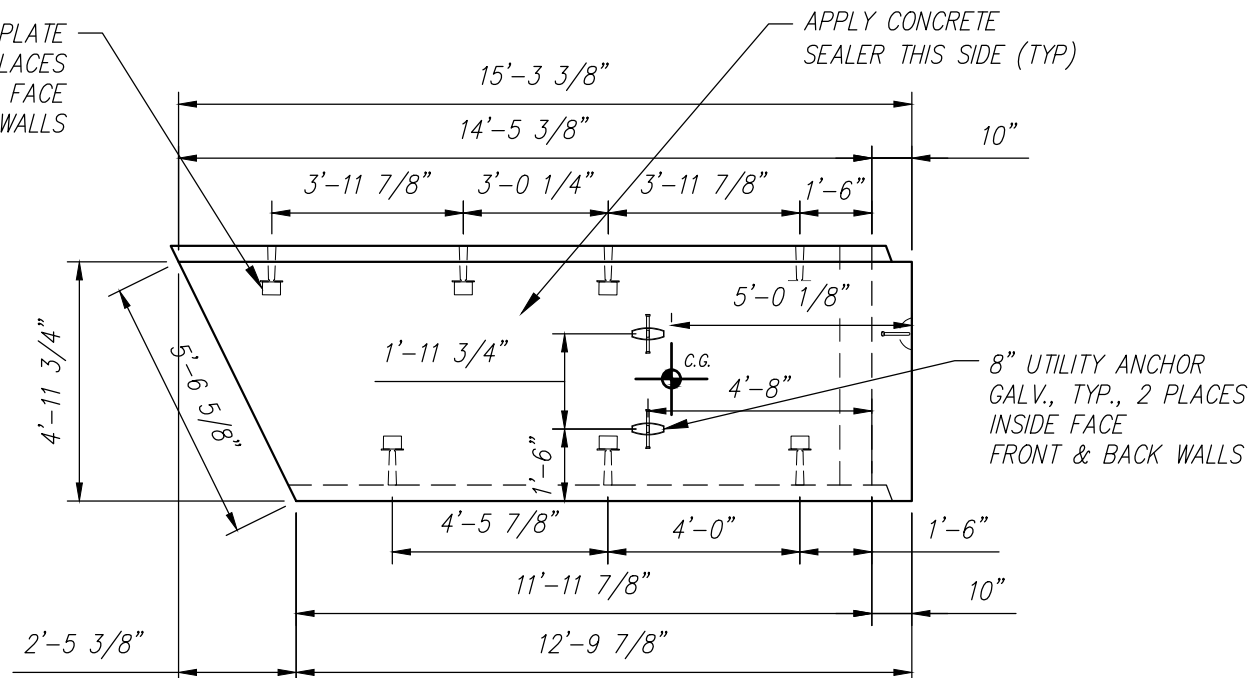


D4 - BILL OF MATERIALS / EMBEDS				
CSI ID#	DESCRIPTION	QTY	UM	COMMENTS
DTJ	CERTI-VEX PENSEAL 244-100%	1.5	GA	
EM-00125	BOLT POCKET PLATES (GALVANIZED)	14	EA	
EM-00115	8" UTILITY ANCHOR -GALVANIZED	6	EA	
JS-00002	1'X1'CLOSED NEOP GASKET	44.17	FT	AROUND BELL
RM-00015	REBAR #5 BLACK-GR 60 40'	31	LB	
RM-00017	REBAR #6 BLACK-GR 60 40'	592	LB	
RM-00098	WIRE MESH ALL SIZES	988	LB	TOTAL WEIGHT
MX-FA5000SC30	MIX DESIGN - FLY ASH 5000 SELF COMPACTIN	6.25	CY	

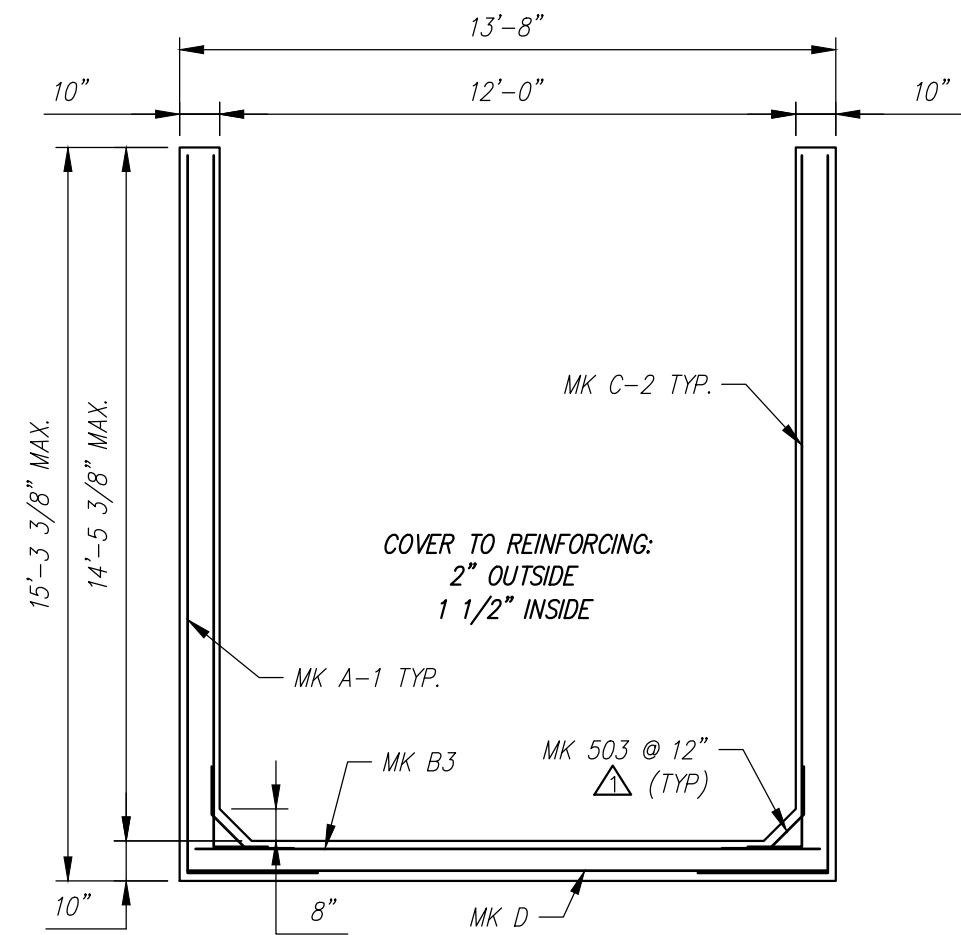
Rebar Schedule			
MARK	QTY	LENGTH	
503 #5	10	3'	0"
604 #6	22	17'	11" MAX.



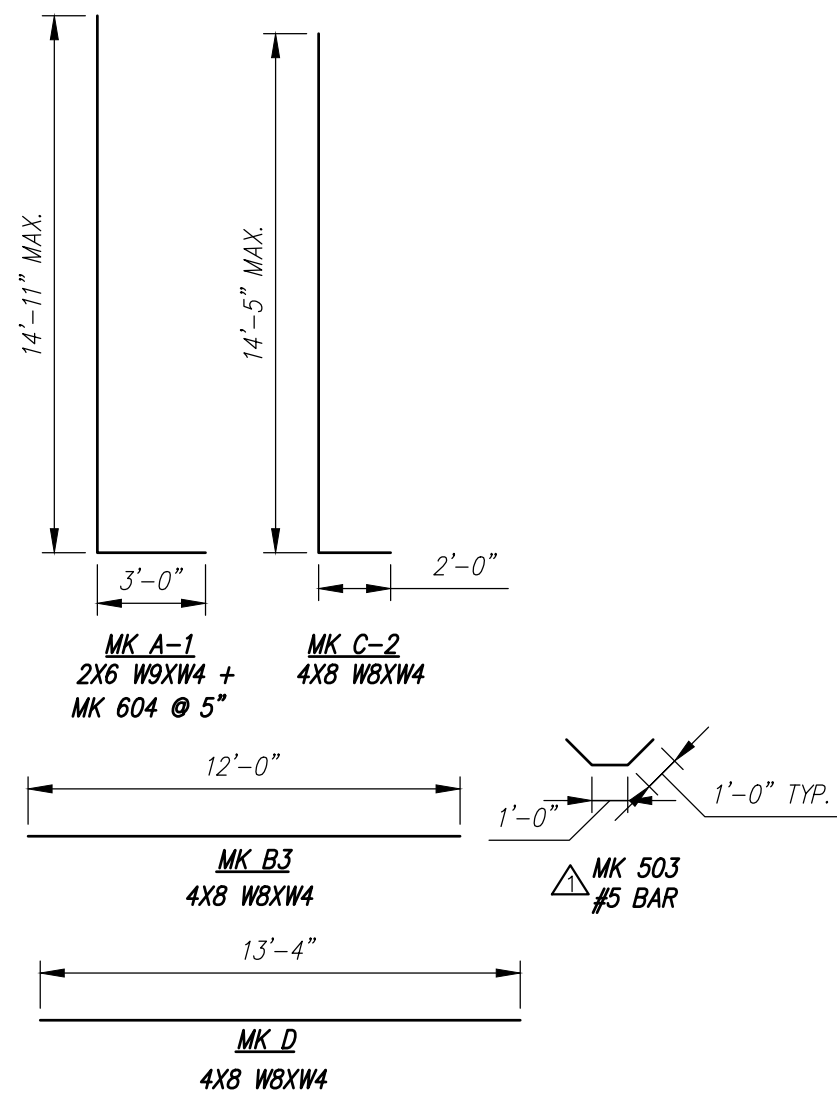
PLAN VIEW  
Scale: 1/4" = 1'-0"



SIDE VIEW  
Scale: 1/4" = 1'-0"




REINFORCING DETAIL  
Scale: 1/4" = 1'-0"



BENDING SCHEDULE  
Scale: N.T.S.

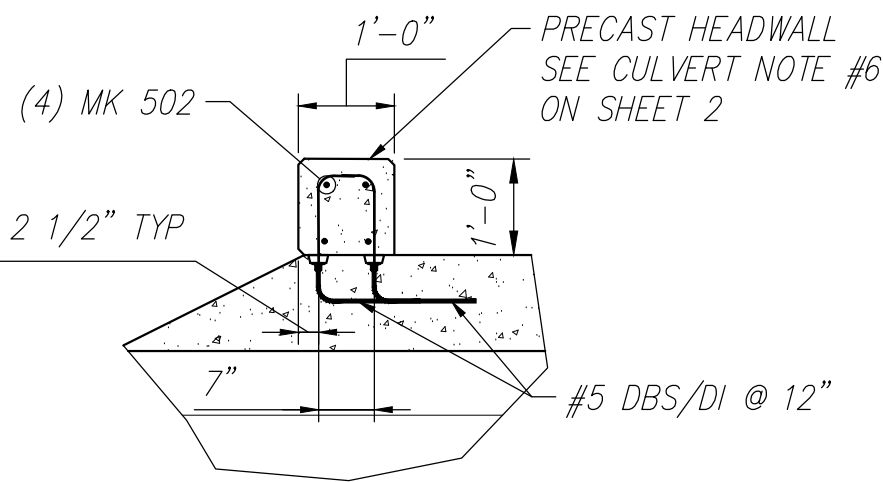
STATE OF MAINE	
DEPARTMENT OF TRANSPORTATION	
<input checked="" type="checkbox"/> REVIEWED	<input type="checkbox"/> REVIEWED WITH COMMENTS
<input type="checkbox"/> REJECTED	<input type="checkbox"/> REVISE AND RESUBMIT
Sep 22, 2021	
THIS DOCUMENT WAS REVIEWED IN ACCORDANCE WITH STATE OF MAINE SPECIFICATION SECTION 105.7 WORKING DRAWINGS	
	Transportation Engineer II
NAME	TITLE

Contractor is to verify that all information shown on drawings has been thoroughly checked, complies with the contract documents and is adequate to meet the field conditions. Some dimensions and details may differ slightly from contract drawings to accommodate the manufacturing or design process. Approval of this drawing indicates that any deviation from the contract documents has been reviewed and found to be acceptable. Production will not commence until receipt of signed, approved shop drawings.	10					This drawing is based upon information provided from the following documents and/or sources: Engineer: MEDOT Project No: N/A Drawings: SNOW SLED BRIDGE SHEET 5 OF 7 Specifications: SPECIAL PROVISION SECTION 534 PRECAST STRUCTURAL CONCRETE Other Sources: N/A	 Concrete Systems Inc. 9 Commercial St., Hudson, NH,03051 Phone 603-889-4163 Fax 603-889-2417	STATE AGENCY		STATE OF MAINE SNOW SLED BRIDGE BREWER — EDDINGTON, ME			
	9							MEDOT					
	8							Drawing By YAA		Date 08/13/2021	D	INDIVIDUAL PIECE SHOP DRAWING D4	REV 1
	7							Reviewed By YAA		Date 08/18/2021			
	6							Approved By		Date			
	5												
	4										Quantity: 1	Project No:WIN 018915.50	SHEET 8 OF 16
	3												
	2												
	1	09/15/2021		REVISED REINFORCING				YAA					
Rev.	Date		DESCRIPTION		By								
			REVISIONS										
FEDERAL AID PROJECT NO. 1891500													

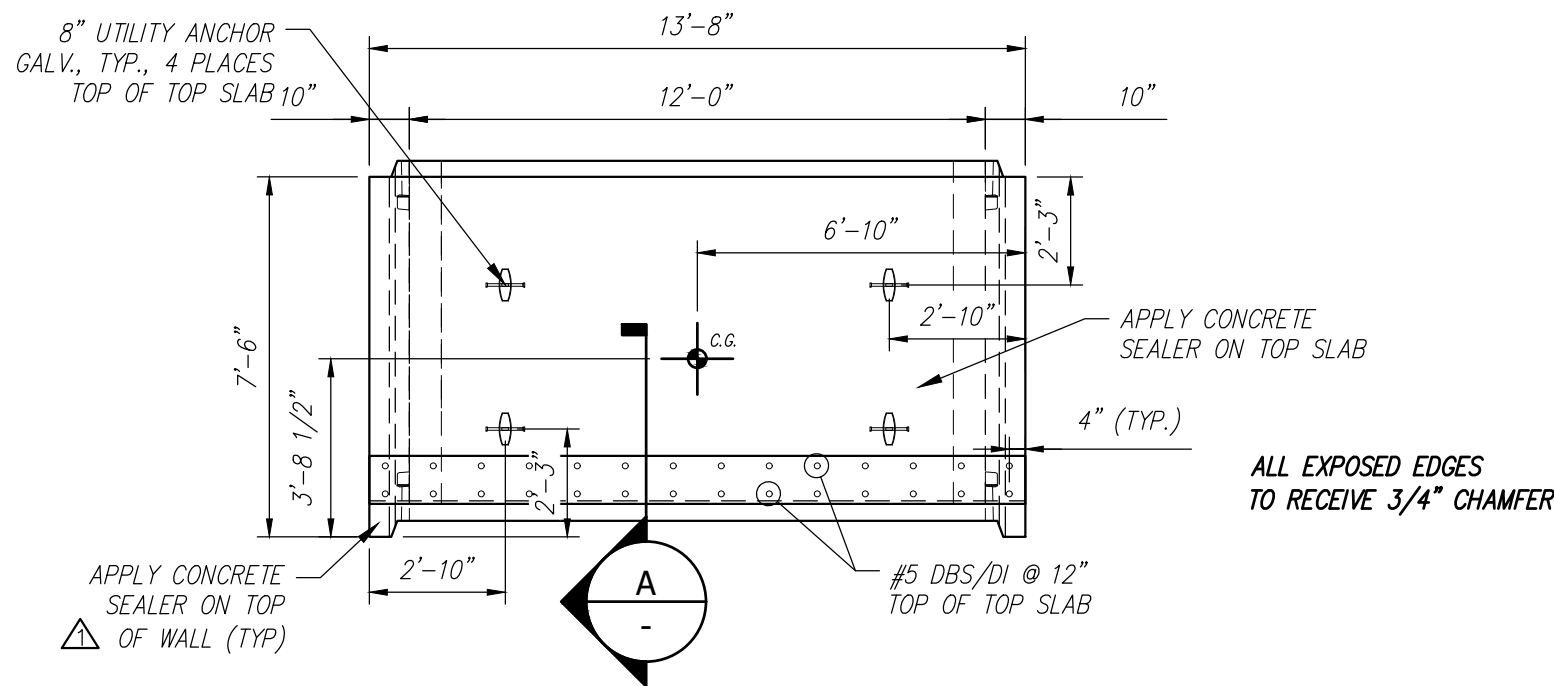
D5 - BILL OF MATERIALS / EMBEDS				
CSI ID#	DESCRIPTION	QTY	UM	COMMENTS
DTJ	CERTI-VEX PENSEAL 244-100%	1.5	GA	
EM-00012	DBSAE #5 X 18" BLACK	28	EA	DOWEL BAR SPLICER
EM-00125	BOLT POCKET PLATES (GALVANIZED)	8	EA	
EM-00115	8" UTILITY ANCHOR - GALVANIZED	6	EA	
JS-00002	1"X1"CLOSED NEOP GASKET	14	FT	AROUND BELL
RM-00013	REBAR #4 BLACK- GR 60	64	LB	
RM-00015	REBAR #5 BLACK-GR 60 40'	379	LB	
RM-00098	WIRE MESH ALL SIZES	740	LB	TOTAL WEIGHT
MX-FA5000SC30	MIX DESIGN - FLY ASH 5000 SELF COMPACTIN	6.22	CY	
HEADWALL - BILL OF MATERIALS / EMBEDS				
DTJ	CERTI-VEX PENSEAL 244-100%	0.3	GA	
EM-00020	DI #5 X 18" BLACK	28	EA	DOWEL IN
RM-00015	REBAR #5 BLACK-GR 60 40'	56	LB	
MX-FA5000SC30	MIX DESIGN - FLY ASH 5000 SELF COMPACTIN	0.51	CY	

Rebar Schedule		
MK	QTY	LENGTH
401 #4	8	12'-0"
501 #5	30	10'-6" MAX.
503 #5	16	3'-0"

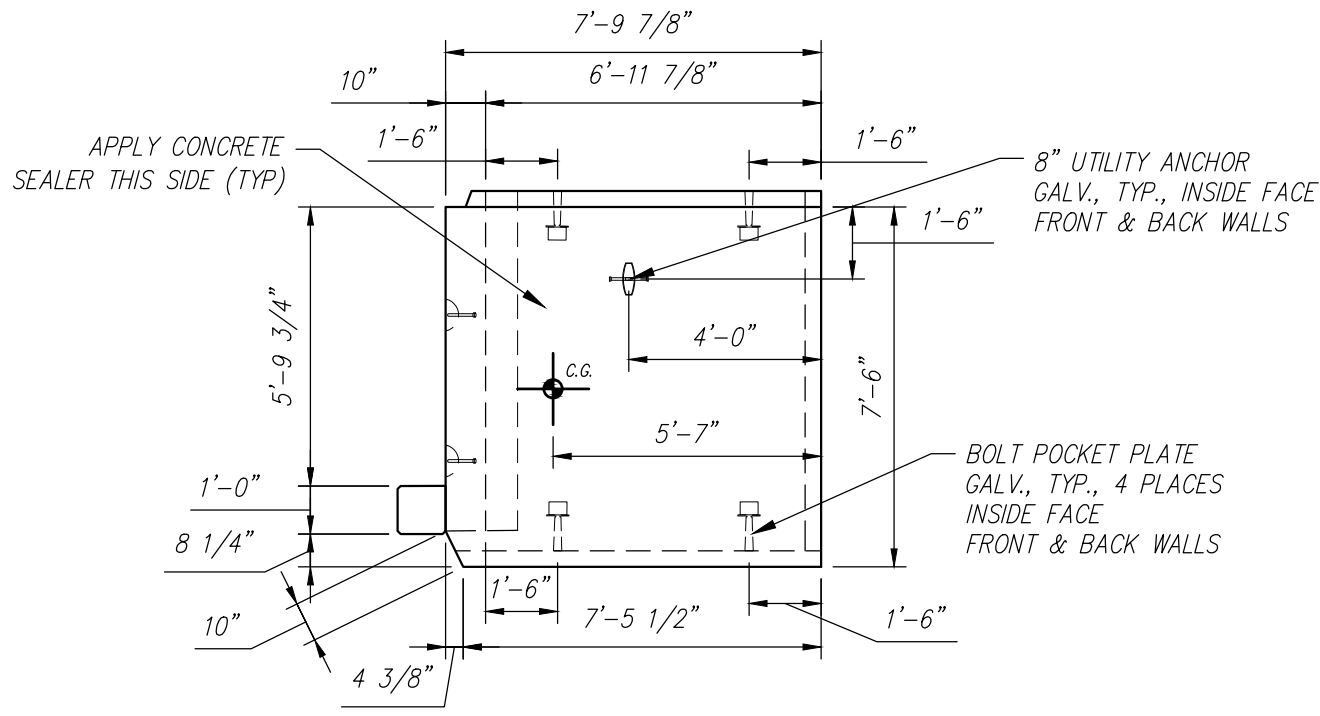
Headwall Rebar Schedule		
MK	QTY	LENGTH
502 #5	4	13'-4"



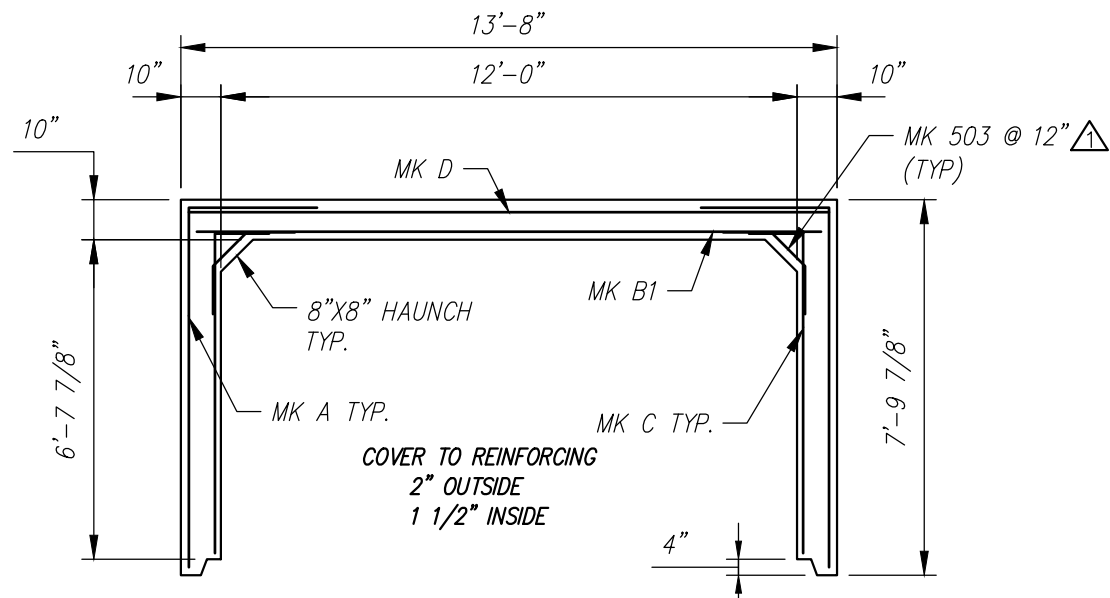
**A HEADWALL END SECTION**  
Scale: 1/2" = 1'-0"



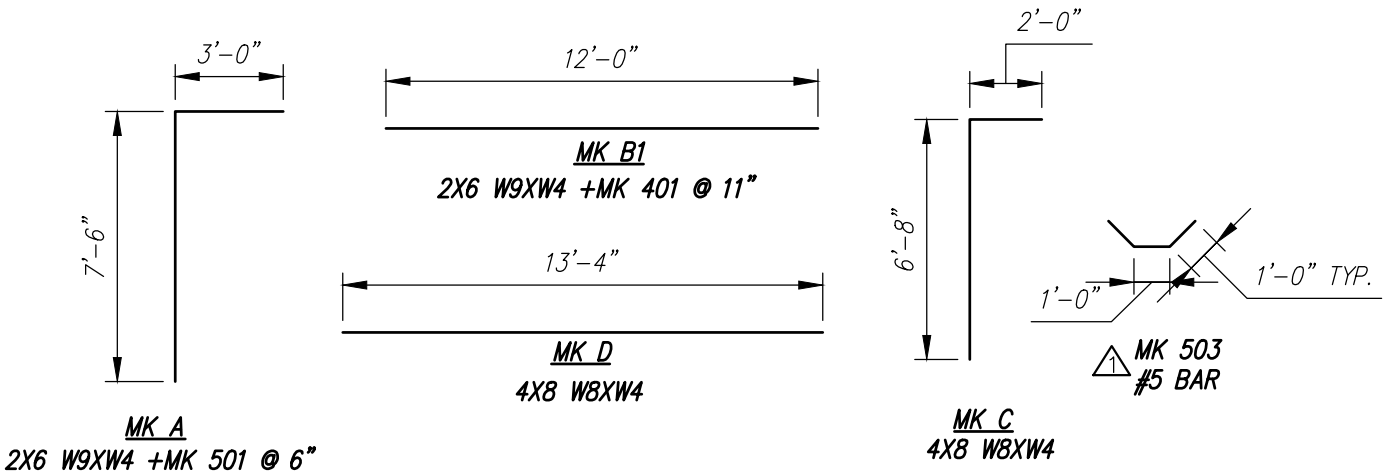
**PLAN VIEW**  
Scale: 1/4" = 1'-0"



**SIDE VIEW**  
Scale: 1/4" = 1'-0"



**REINFORCING DETAIL**  
Scale: 1/4" = 1'-0"



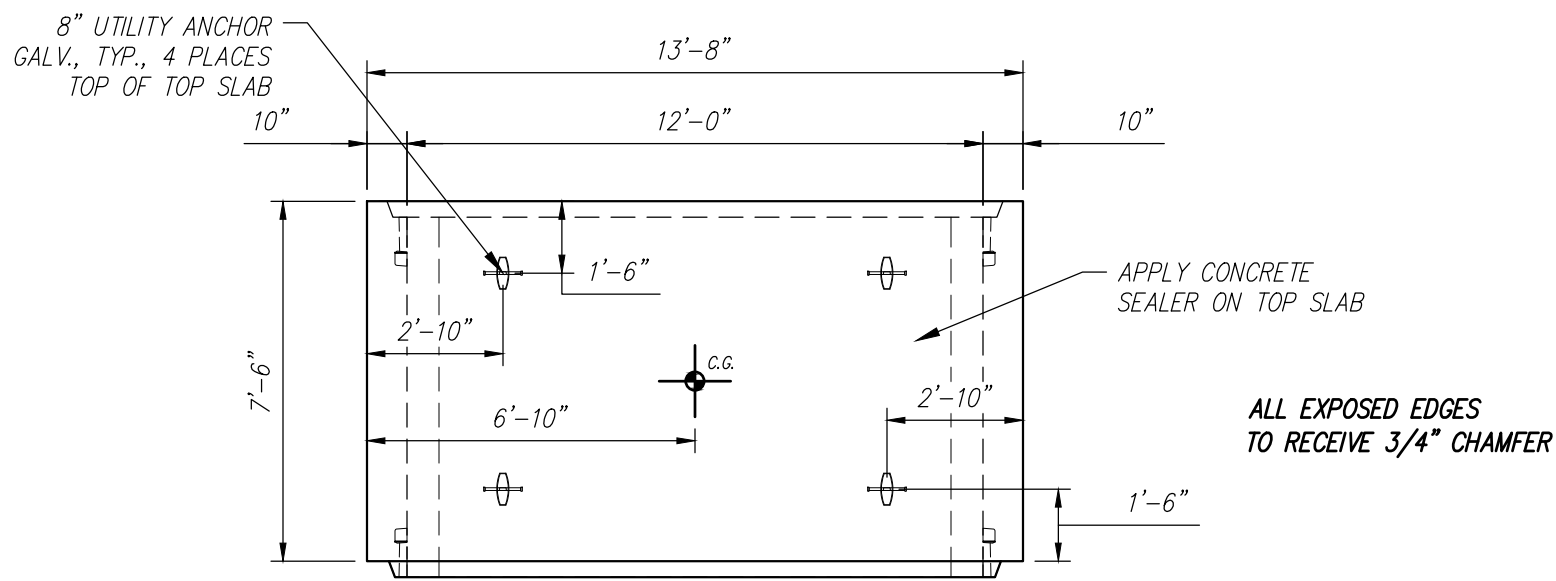
**BENDING SCHEDULE**  
Scale: N.T.S.

STATE OF MAINE	
DEPARTMENT OF TRANSPORTATION	
<input checked="" type="checkbox"/> REVIEWED	<input type="checkbox"/> REVIEWED WITH COMMENTS
<input type="checkbox"/> REJECTED	<input type="checkbox"/> REVISE AND RESUBMIT
Sep 22, 2021	
THIS DOCUMENT WAS REVIEWED IN ACCORDANCE WITH STATE OF MAINE SPECIFICATION SECTION 105.7 WORKING DRAWINGS	
<i>James H. H. H.</i>	Transportation Engineer II
NAME	TITLE

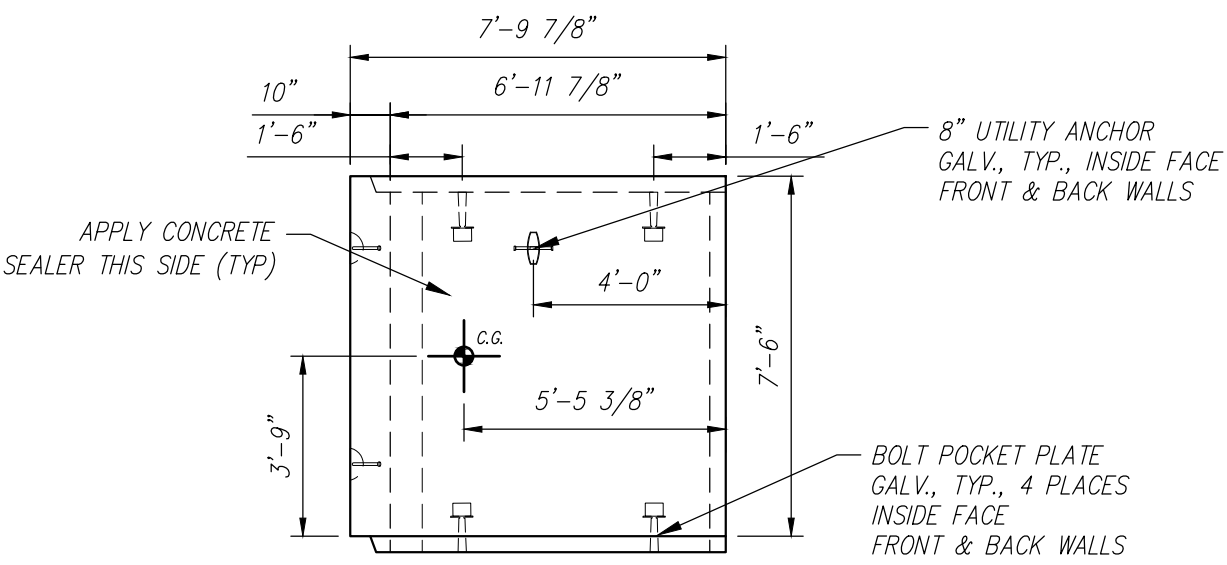
Contractor is to verify that all information shown on drawings has been thoroughly checked, complies with the contract documents and is adequate to meet the field conditions. Some dimensions and details may differ slightly from contract drawings to accommodate the manufacturing or design process. Approval of this drawing indicates that any deviation from the contract documents has been reviewed and found to be acceptable. Production will not commence until receipt of signed, approved shop drawings.		10																																																																																																																																																																																																																																																																																																																																																																																																																																																																																																																																																																																																																																																																																																																																																																																																																																																																																																																																																																																																																																																																																																																																																																																																																																																																																																																																																																																																																																																																																																																																																																																																																																																																																																																																													</
---	--	----	--	--	--	--	--	--	--	--	--	--	--	--	--	--	--	--	--	--	--	--	--	--	--	--	--	--	--	--	--	--	--	--	--	--	--	--	--	--	--	--	--	--	--	--	--	--	--	--	--	--	--	--	--	--	--	--	--	--	--	--	--	--	--	--	--	--	--	--	--	--	--	--	--	--	--	--	--	--	--	--	--	--	--	--	--	--	--	--	--	--	--	--	--	--	--	--	--	--	--	--	--	--	--	--	--	--	--	--	--	--	--	--	--	--	--	--	--	--	--	--	--	--	--	--	--	--	--	--	--	--	--	--	--	--	--	--	--	--	--	--	--	--	--	--	--	--	--	--	--	--	--	--	--	--	--	--	--	--	--	--	--	--	--	--	--	--	--	--	--	--	--	--	--	--	--	--	--	--	--	--	--	--	--	--	--	--	--	--	--	--	--	--	--	--	--	--	--	--	--	--	--	--	--	--	--	--	--	--	--	--	--	--	--	--	--	--	--	--	--	--	--	--	--	--	--	--	--	--	--	--	--	--	--	--	--	--	--	--	--	--	--	--	--	--	--	--	--	--	--	--	--	--	--	--	--	--	--	--	--	--	--	--	--	--	--	--	--	--	--	--	--	--	--	--	--	--	--	--	--	--	--	--	--	--	--	--	--	--	--	--	--	--	--	--	--	--	--	--	--	--	--	--	--	--	--	--	--	--	--	--	--	--	--	--	--	--	--	--	--	--	--	--	--	--	--	--	--	--	--	--	--	--	--	--	--	--	--	--	--	--	--	--	--	--	--	--	--	--	--	--	--	--	--	--	--	--	--	--	--	--	--	--	--	--	--	--	--	--	--	--	--	--	--	--	--	--	--	--	--	--	--	--	--	--	--	--	--	--	--	--	--	--	--	--	--	--	--	--	--	--	--	--	--	--	--	--	--	--	--	--	--	--	--	--	--	--	--	--	--	--	--	--	--	--	--	--	--	--	--	--	--	--	--	--	--	--	--	--	--	--	--	--	--	--	--	--	--	--	--	--	--	--	--	--	--	--	--	--	--	--	--	--	--	--	--	--	--	--	--	--	--	--	--	--	--	--	--	--	--	--	--	--	--	--	--	--	--	--	--	--	--	--	--	--	--	--	--	--	--	--	--	--	--	--	--	--	--	--	--	--	--	--	--	--	--	--	--	--	--	--	--	--	--	--	--	--	--	--	--	--	--	--	--	--	--	--	--	--	--	--	--	--	--	--	--	--	--	--	--	--	--	--	--	--	--	--	--	--	--	--	--	--	--	--	--	--	--	--	--	--	--	--	--	--	--	--	--	--	--	--	--	--	--	--	--	--	--	--	--	--	--	--	--	--	--	--	--	--	--	--	--	--	--	--	--	--	--	--	--	--	--	--	--	--	--	--	--	--	--	--	--	--	--	--	--	--	--	--	--	--	--	--	--	--	--	--	--	--	--	--	--	--	--	--	--	--	--	--	--	--	--	--	--	--	--	--	--	--	--	--	--	--	--	--	--	--	--	--	--	--	--	--	--	--	--	--	--	--	--	--	--	--	--	--	--	--	--	--	--	--	--	--	--	--	--	--	--	--	--	--	--	--	--	--	--	--	--	--	--	--	--	--	--	--	--	--	--	--	--	--	--	--	--	--	--	--	--	--	--	--	--	--	--	--	--	--	--	--	--	--	--	--	--	--	--	--	--	--	--	--	--	--	--	--	--	--	--	--	--	--	--	--	--	--	--	--	--	--	--	--	--	--	--	--	--	--	--	--	--	--	--	--	--	--	--	--	--	--	--	--	--	--	--	--	--	--	--	--	--	--	--	--	--	--	--	--	--	--	--	--	--	--	--	--	--	--	--	--	--	--	--	--	--	--	--	--	--	--	--	--	--	--	--	--	--	--	--	--	--	--	--	--	--	--	--	--	--	--	--	--	--	--	--	--	--	--	--	--	--	--	--	--	--	--	--	--	--	--	--	--	--	--	--	--	--	--	--	--	--	--	--	--	--	--	--	--	--	--	--	--	--	--	--	--	--	--	--	--	--	--	--	--	--	--	--	--	--	--	--	--	--	--	--	--	--	--	--	--	--	--	--	--	--	--	--	--	--	--	--	--	--	--	--	--	--	--	--	--	--	--	--	--	--	--	--	--	--	--	--	--	--	--	--	--	--	--	--	--	--	--	--	--	--	--	--	--	--	--	--	--	--	--	--	--	--	--	--	--	--	--	--	--	--	--	--	--	--	--	--	--	--	--	--	--	--	--	--	--	--	--	--	--	--	--	--	--	--	--	--	--	--	--	--	--	--	--	--	--	--	--	--	--	--	--	--	--	--	--	--	--	--	--	--	--	--	--	--	--	--	--	--	--	--	--	--	--	--	--	--	--	--	--	--	--	--	--	--	--	--	--	--	--	--	--	--	--	--	--	--	--	--	--	--	--	--	--	--	--	--	--	--	--	--	--	--	--	--	--	--	--	--	--	--	--	--	--	--	--	--	--	--	--	--	--	--	--	--	--	--	--	--	--	--	--	--	--	--	--	--	--	--	--	--	--	--	--	--	--	--	--	--	--	--	--	--	--	--	--	--	--	--	--	--	--	--	--	--	--	--	--	--	--	--	--	--	--	--	--	--	--	--	--	--	--	--	--	--	--	--	--	--	--	--	--	--	--	--	--	--	--	--	--	--	--	--	--	--	--	--	--	--	--	--	--	--	--	--	--	--	--	--	--	--	--	--	--	--	--	--	--	--	--	--	--	--	--	--	--	--	--	--	--	--	--	--	--	--	--	--	--	--	--	--	--	--	--	--	--	--	--	--	--	--	--	--	--	--	--	--	--	--	--	--	--	--	--	--	--	--	--	--	--	--	--	--	--	--	--	--	--	--	--	--	--	--	--	--	--	--	--	--	--	--	--	--	--	--	--	--	--	--	--	--	--	--	--	--	--	--	--	--	--	--	--	--	--	--	--	--	--	--	--	--	--	--	--	--	--	--	--	--	--	--	--	--	--	--	--	--	--	--	--	--	--	--	--	--	--	--	--	--	--	--	--	--	--	--	--	--	--	--	--	--	--	--	--	--	--	--	--	--	--	--	--	--	--	--	--	--	--	--	--	--	--	--	--	--	--	--	--	--	--	--	--	--	--	--	--	--	--	--	--	--	--	--	--	--	--	--	--	--	--	--	--	--	--	--	--	--	--	--	--	--	--	--	--	--	--	--	--	--	--	--	--	--	--	--	--	--	--	--	--	--	--	--	--	--	--	--	--	--	--	--	--	--	--	--	--	--	--	--	--	--	--	--	--	--	--	--	--	--	--	--	--	--	--	--	--	--	--	--	--	--	--	--	--	--	--	--	--	--	--	--	--	--	--	--	--	--	--	--	--	--	--	--	--	--	--	--	--	--	--	--	--	--	--	--	--	--	--	--	--	--	--	--	--	--	--	--	--	--	--	--	--	--	--	--	--	--	--	--	--	--	--	--	--	--	--	--	--	--	--	--	--	--	--	--	--	--	--	--	--	--	--	--	--	--	--	--	--	--	--	--	--	--	--	--	--	--	--	--	--	--	--	--	--	--	--	--	--	--	--	--	--	--	--	--	--	--	--	--	--	--	--	--	--	--	--	--	--	--	--	--	--	--	--	--	--	--	--	--	--	--	--	--	--	--	--	--	--	--	--	--	--	--	--	--	--	--	--	--	--	--	--	--	--	--	--	--	--	--	--	--	--	--	--	--	--	--	--	--	--	--	--	--	--	--	--	--	--	--	--	--	--	--	--	--	--	--	--	--	--	--	--	--	--	----

D6 - BILL OF MATERIALS / EMBEDS				
CSI ID#	DESCRIPTION	QTY	UM	COMMENTS
DTJ	CERTI-VEX PENSEAL 244-100%	1.7	GA	
EM-00125	BOLT POCKET PLATES (GALVANIZED)	8	EA	
EM-00115	8" UTILITY ANCHOR -GALVANIZED	6	EA	
JS-00002	1"X1"CLOSED NEOP GASKET	26.67	FT	AROUND BELL
RM-00013	REBAR #4 BLACK- GR 60	64	LB	
RM-00015	REBAR #5 BLACK-GR 60 40'	379	LB	
RM-00098	WIRE MESH ALL SIZES	740	LB	TOTAL WEIGHT
MX-FA5000SC30	MIX DESIGN - FLY ASH 5000 SELF COMPACTIN	6.65	CY	

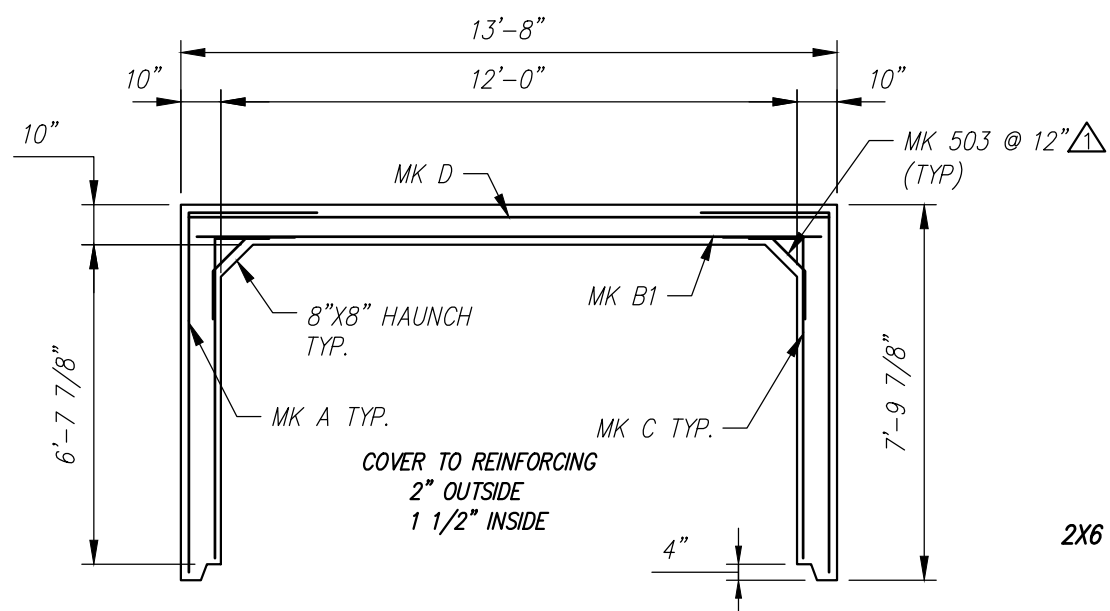
Rebar Schedule			
MK	QTY	LENGTH	
401 #4	8	12	' 0 "
501 #5	30	10	' 6 "
503 #5	16	3	' 0 "



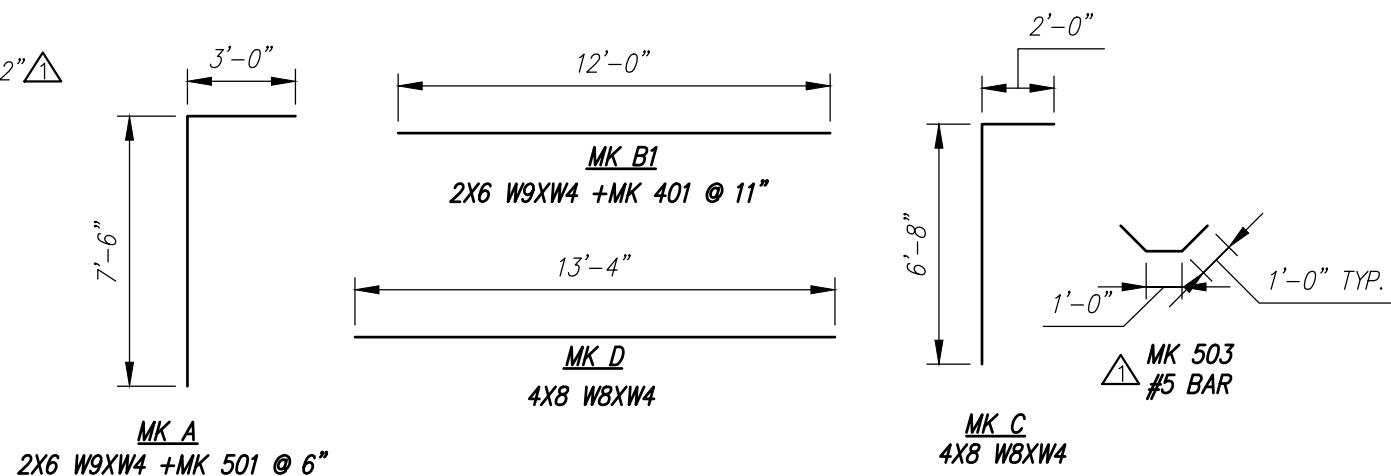
PLAN VIEW  
Scale: 1/4" = 1'-0"



SIDE VIEW  
Scale: 1/4" = 1'-0"



REINFORCING DETAIL  
Scale: 1/4" = 1'-0"



BENDING SCHEDULE  
Scale: N.T.S.

STATE OF MAINE	
DEPARTMENT OF TRANSPORTATION	
<input checked="" type="checkbox"/> REVIEWED	<input type="checkbox"/> REVIEWED WITH COMMENTS
<input type="checkbox"/> REJECTED	<input type="checkbox"/> REVISE AND RESUBMIT
Sep 22, 2021	
THIS DOCUMENT WAS REVIEWED IN ACCORDANCE WITH STATE OF MAINE SPECIFICATION SECTION 105.7 WORKING DRAWINGS	
	Transportation Engineer II
NAME	TITLE

Contractor is to verify that all information shown on drawings has been thoroughly checked, complies with the contract documents and is adequate to meet the field conditions. Some dimensions and details may differ slightly from contract drawings to accommodate the manufacturing or design process. Approval of this drawing indicates that any deviation from the contract documents has been reviewed and found to be acceptable. Production will not commence until receipt of signed, approved shop drawings.	10																																																																																																																																																																																																																																																																																																																																																																																																																																																																																																																																																																																																																																																																																																																																																																																																																																																																																																																																																																																																																																																																																																																																																																																																																																																																																																																																																																																																																																
---	----	--	--	--	--	--	--	--	--	--	--	--	--	--	--	--	--	--	--	--	--	--	--	--	--	--	--	--	--	--	--	--	--	--	--	--	--	--	--	--	--	--	--	--	--	--	--	--	--	--	--	--	--	--	--	--	--	--	--	--	--	--	--	--	--	--	--	--	--	--	--	--	--	--	--	--	--	--	--	--	--	--	--	--	--	--	--	--	--	--	--	--	--	--	--	--	--	--	--	--	--	--	--	--	--	--	--	--	--	--	--	--	--	--	--	--	--	--	--	--	--	--	--	--	--	--	--	--	--	--	--	--	--	--	--	--	--	--	--	--	--	--	--	--	--	--	--	--	--	--	--	--	--	--	--	--	--	--	--	--	--	--	--	--	--	--	--	--	--	--	--	--	--	--	--	--	--	--	--	--	--	--	--	--	--	--	--	--	--	--	--	--	--	--	--	--	--	--	--	--	--	--	--	--	--	--	--	--	--	--	--	--	--	--	--	--	--	--	--	--	--	--	--	--	--	--	--	--	--	--	--	--	--	--	--	--	--	--	--	--	--	--	--	--	--	--	--	--	--	--	--	--	--	--	--	--	--	--	--	--	--	--	--	--	--	--	--	--	--	--	--	--	--	--	--	--	--	--	--	--	--	--	--	--	--	--	--	--	--	--	--	--	--	--	--	--	--	--	--	--	--	--	--	--	--	--	--	--	--	--	--	--	--	--	--	--	--	--	--	--	--	--	--	--	--	--	--	--	--	--	--	--	--	--	--	--	--	--	--	--	--	--	--	--	--	--	--	--	--	--	--	--	--	--	--	--	--	--	--	--	--	--	--	--	--	--	--	--	--	--	--	--	--	--	--	--	--	--	--	--	--	--	--	--	--	--	--	--	--	--	--	--	--	--	--	--	--	--	--	--	--	--	--	--	--	--	--	--	--	--	--	--	--	--	--	--	--	--	--	--	--	--	--	--	--	--	--	--	--	--	--	--	--	--	--	--	--	--	--	--	--	--	--	--	--	--	--	--	--	--	--	--	--	--	--	--	--	--	--	--	--	--	--	--	--	--	--	--	--	--	--	--	--	--	--	--	--	--	--	--	--	--	--	--	--	--	--	--	--	--	--	--	--	--	--	--	--	--	--	--	--	--	--	--	--	--	--	--	--	--	--	--	--	--	--	--	--	--	--	--	--	--	--	--	--	--	--	--	--	--	--	--	--	--	--	--	--	--	--	--	--	--	--	--	--	--	--	--	--	--	--	--	--	--	--	--	--	--	--	--	--	--	--	--	--	--	--	--	--	--	--	--	--	--	--	--	--	--	--	--	--	--	--	--	--	--	--	--	--	--	--	--	--	--	--	--	--	--	--	--	--	--	--	--	--	--	--	--	--	--	--	--	--	--	--	--	--	--	--	--	--	--	--	--	--	--	--	--	--	--	--	--	--	--	--	--	--	--	--	--	--	--	--	--	--	--	--	--	--	--	--	--	--	--	--	--	--	--	--	--	--	--	--	--	--	--	--	--	--	--	--	--	--	--	--	--	--	--	--	--	--	--	--	--	--	--	--	--	--	--	--	--	--	--	--	--	--	--	--	--	--	--	--	--	--	--	--	--	--	--	--	--	--	--	--	--	--	--	--	--	--	--	--	--	--	--	--	--	--	--	--	--	--	--	--	--	--	--	--	--	--	--	--	--	--	--	--	--	--	--	--	--	--	--	--	--	--	--	--	--	--	--	--	--	--	--	--	--	--	--	--	--	--	--	--	--	--	--	--	--	--	--	--	--	--	--	--	--	--	--	--	--	--	--	--	--	--	--	--	--	--	--	--	--	--	--	--	--	--	--	--	--	--	--	--	--	--	--	--	--	--	--	--	--	--	--	--	--	--	--	--	--	--	--	--	--	--	--	--	--	--	--	--	--	--	--	--	--	--	--	--	--	--	--	--	--	--	--	--	--	--	--	--	--	--	--	--	--	--	--	--	--	--	--	--	--	--	--	--	--	--	--	--	--	--	--	--	--	--	--	--	--	--	--	--	--	--	--	--	--	--	--	--	--	--	--	--	--	--	--	--	--	--	--	--	--	--	--	--	--	--	--	--	--	--	--	--	--	--	--	--	--	--	--	--	--	--	--	--	--	--	--	--	--	--	--	--	--	--	--	--	--	--	--	--	--	--	--	--	--	--	--	--	--	--	--	--	--	--	--	--	--	--	--	--	--	--	--	--	--	--	--	--	--	--	--	--	--	--	--	--	--	--	--	--	--	--	--	--	--	--	--	--	--	--	--	--	--	--	--	--	--	--	--	--	--	--	--	--	--	--	--	--	--	--	--	--	--	--	--	--	--	--	--	--	--	--	--	--	--	--	--	--	--	--	--	--	--	--	--	--	--	--	--	--	--	--	--	--	--	--	--	--	--	--	--	--	--	--	--	--	--	--	--	--	--	--	--	--	--	--	--	--	--	--	--	--	--	--	--	--	--	--	--	--	--	--	--	--	--	--	--	--	--	--	--	--	--	--	--	--	--	--	--	--	--	--	--	--	--	--	--	--	--	--	--	--	--	--	--	--	--	--	--	--	--	--	--	--	--	--	--	--	--	--	--	--	--	--	--	--	--	--	--	--	--	--	--	--	--	--	--	--	--	--	--	--	--	--	--	--	--	--	--	--	--	--	--	--	--	--	--	--	--	--	--	--	--	--	--	--	--	--	--	--	--	--	--	--	--	--	--	--	--	--	--	--	--	--	--	--	--	--	--	--	--	--	--	--	--	--	--	--	--	--	--	--	--	--	--	--	--	--	--	--	--	--	--	--	--	--	--	--	--	--	--	--	--	--	--	--	--	--	--	--	--	--	--	--	--	--	--	--	--	--	--	--	--	--	--	--	--	--	--	--	--	--	--	--	--	--	--	--	--	--	--	--	--	--	--	--	--	--	--	--	--	--	--	--	--	--	--	--	--	--	--	--	--	--	--	--	--	--	--	--	--	--	--	--	--	--	--	--	--	--	--	--	--	--	--	--	--	--	--	--	--	--	--	--	--	--	--	--	--	--	--	--	--	--	--	--	--	--	--	--	--	--	--	--	--	--	--	--	--	--	--	--	--	--	--	--	--	--	--	--	--	--



Rebar Schedule				
MK		QTY	LENGTH	
401	#4	8	12 ' - 0 "	
501	#5	30	10 ' - 6 "	MAX.
503	#5	16	3 ' - 0 "	

(4) MK 502

2 1/2" TYP

7"

1'-0"

1'-0"

#4

#5 DBS/DI @ 12"

PRECAST HEADWALL  
SEE CULVERT NOTE #6  
ON SHEET 2

8" UTILITY ANCHOR GALV., TYP., 4 PLACES TOP OF TOP SLAB 10"

13'-8"

12'-0"

10"

7'-6"

3'-8 1/2"

2'-10"

6'-10"

2'-10"

2'-3"

APPLY CONCRETE SEALER ON TOP SLAB

4" (TYP.)

ALL EXPOSED EDGES TO RECEIVE 3/4" CHAMFER

APPLY CONCRETE SEALER ON TOP OF WALL (TYP.)

2'-10"

A

#5 DBS/DI @ 12" TOP OF TOP SLAB

Technical drawing of a rectangular structure, likely a foundation or wall section, showing dimensions and construction details. The drawing includes the following dimensions and annotations:

- Top Dimensions:**
  - Overall width:  $7'-9 \frac{7}{8}"$
  - Distance from left edge to centerline (C.C.):  $10"$
  - Distance from centerline (C.C.) to right edge:  $6'-11 \frac{7}{8}"$
- Left Side Dimensions:**
  - Overall height:  $5'-9 \frac{3}{4}"$
  - Distance from top edge to bottom edge:  $1'-0"$
  - Distance from bottom edge to base:  $8 \frac{1}{4}"$
  - Distance from left edge to centerline (C.C.):  $10"$
- Right Side Dimensions:**
  - Overall height:  $7'-6"$
  - Distance from top edge to bottom edge:  $1'-6"$
  - Distance from bottom edge to base:  $1'-6"$
- Internal Dimensions and Features:**
  - Distance from left edge to centerline (C.C.):  $1'-6"$
  - Distance from centerline (C.C.) to right edge:  $5'-7"$
  - Distance from left edge to centerline (C.C.):  $1'-6"$
  - Distance from centerline (C.C.) to right edge:  $7'-5 \frac{3}{8}"$
  - Distance from left edge to centerline (C.C.):  $4 \frac{3}{8}"$
- Annotations:**
  - APPLY CONCRETE SEALER THIS SIDE (TYP)
  - 8" UTILITY ANCHOR GALV., TYP., INSIDE FACE FRONT & BACK WALLS
  - BOLT POCKET PLATE GALV., TYP., 4 PLACES INSIDE FACE FRONT & BACK WALLS
  - C.C. (Centerline)

Technical drawing of a rectangular reinforced concrete slab. The overall dimensions are 13'-8" by 7'-9 7/8". The drawing shows the slab with reinforcement bars (MK) and a haunch at the corners. The reinforcement details include MK D, MK 503 @ 12" (TYP), MK B1, MK C TYP, and MK A TYP. The haunch is 8" x 8" and is a typical detail. The drawing also shows the cover to the reinforcing, which is 2" outside and 1 1/2" inside. The drawing is labeled with dimensions and reinforcement details.

Dimensions:

- Overall width: 13'-8"
- Overall height: 7'-9 7/8"
- Top edge offset: 10"
- Bottom edge offset: 10"
- Left edge offset: 10"
- Right edge offset: 10"
- Corner haunch: 8" x 8" (TYP)
- Reinforcement cover: 2" outside, 1 1/2" inside
- Reinforcement bar spacing: 12" (TYP)
- Reinforcement bar diameter: 1/2"

Reinforcement Details:

- Top edge: MK D
- Right edge: MK 503 @ 12" (TYP)
- Bottom edge: MK B1
- Left edge: MK C TYP
- Corner haunch: MK A TYP

Labels:

- COVER TO REINFORCING
- 2" OUTSIDE
- 1 1/2" INSIDE
- 4"
- 7'-9 7/8"
- 10"
- 10"
- 10"
- 10"
- 13'-8"
- 7'-9 7/8"
- 8" x 8" HAUNCH TYP.
- MK A TYP.
- MK D
- MK 503 @ 12" (TYP)
- MK B1
- MK C TYP.
- 3'-0"
- 7'-6"
- MK A
- 2X6 W9X14 + MK 501 @ 6"

12'-0"

MK B1  
2X6 W9XW4 + MK 401 @ 11"

13'-4"

MK D  
4X8 W8XW4

2'-0"

6'-8"

1'-0" TYP.

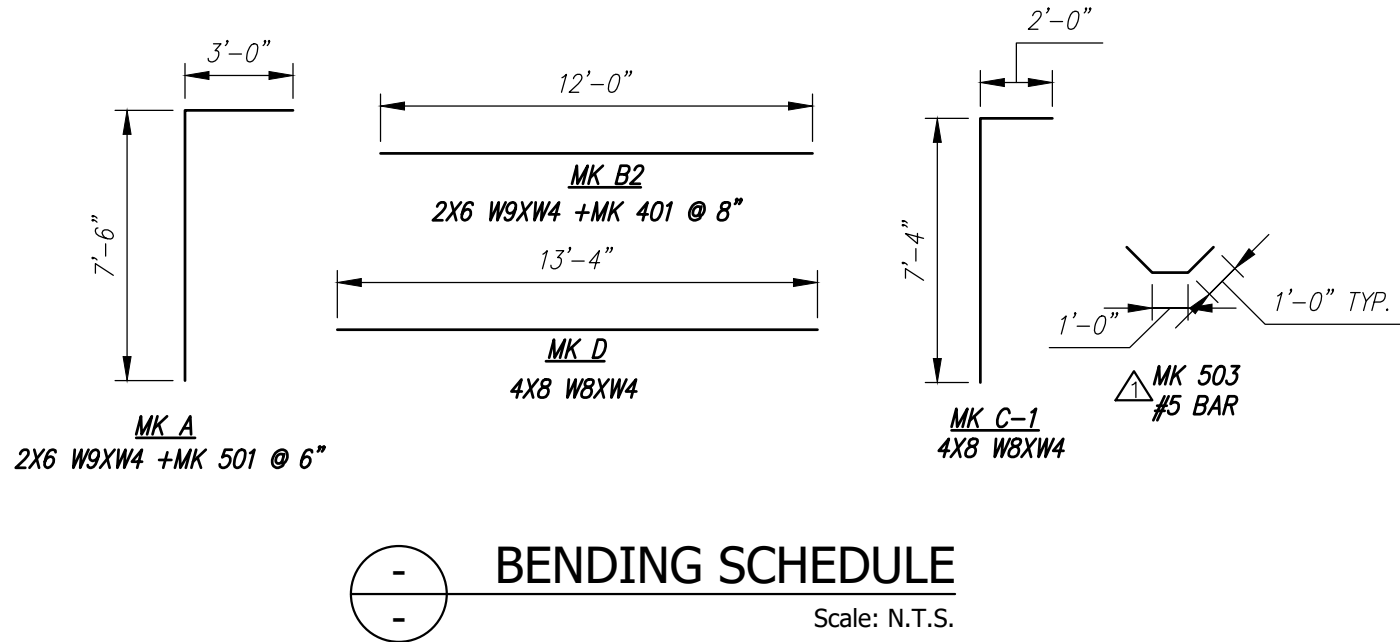
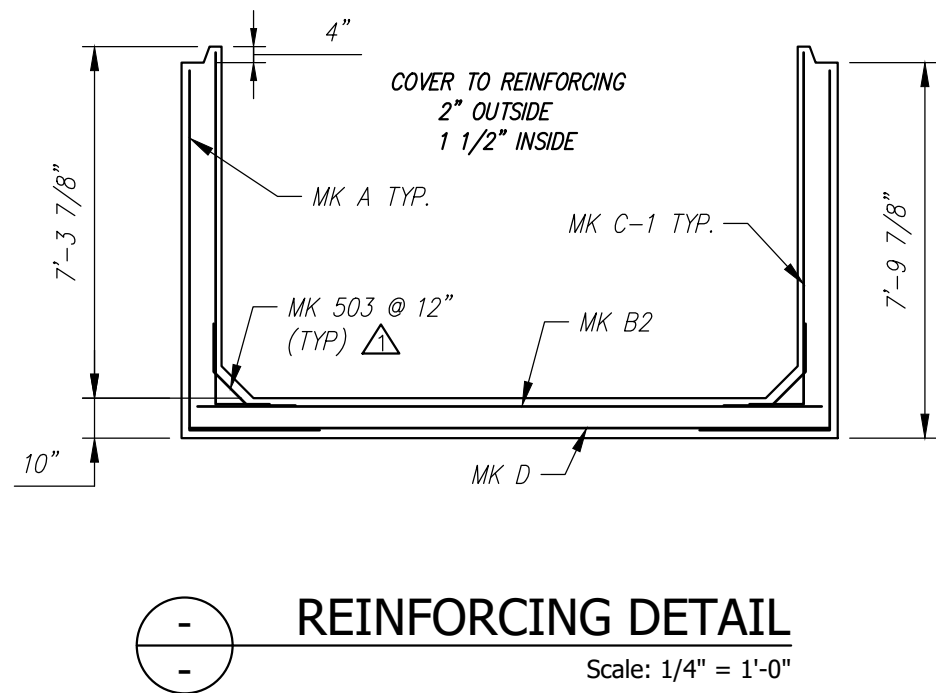
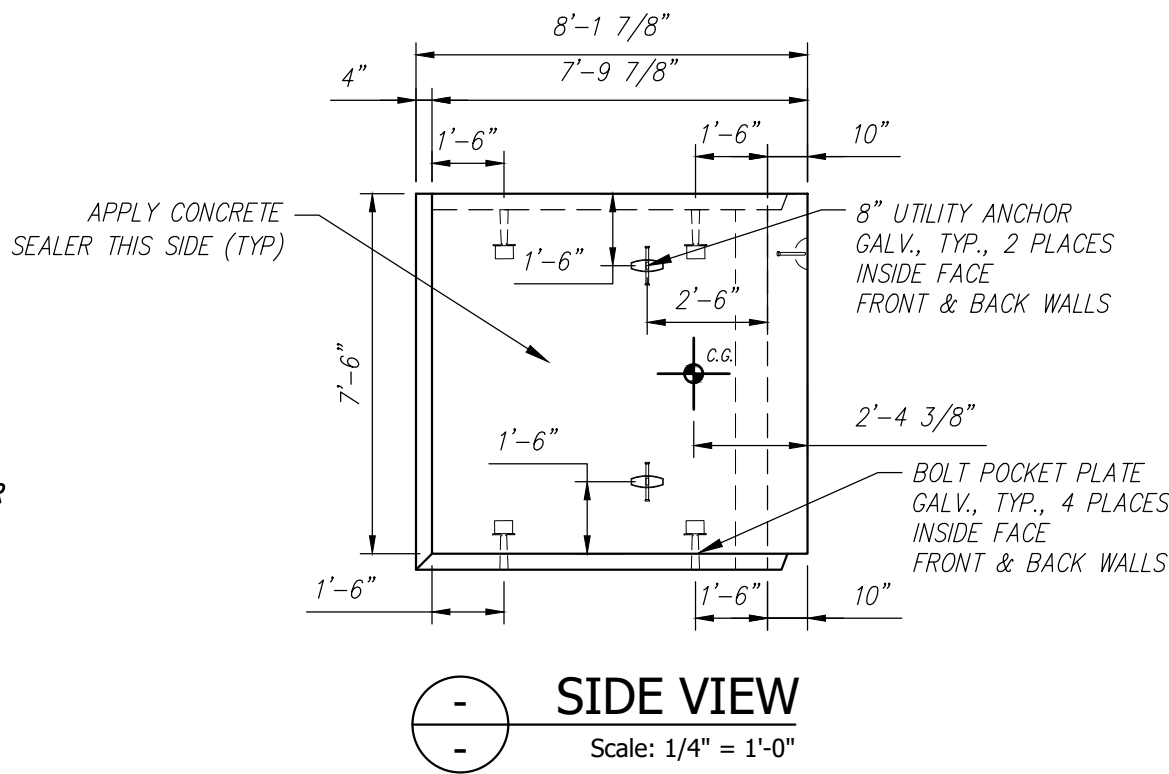
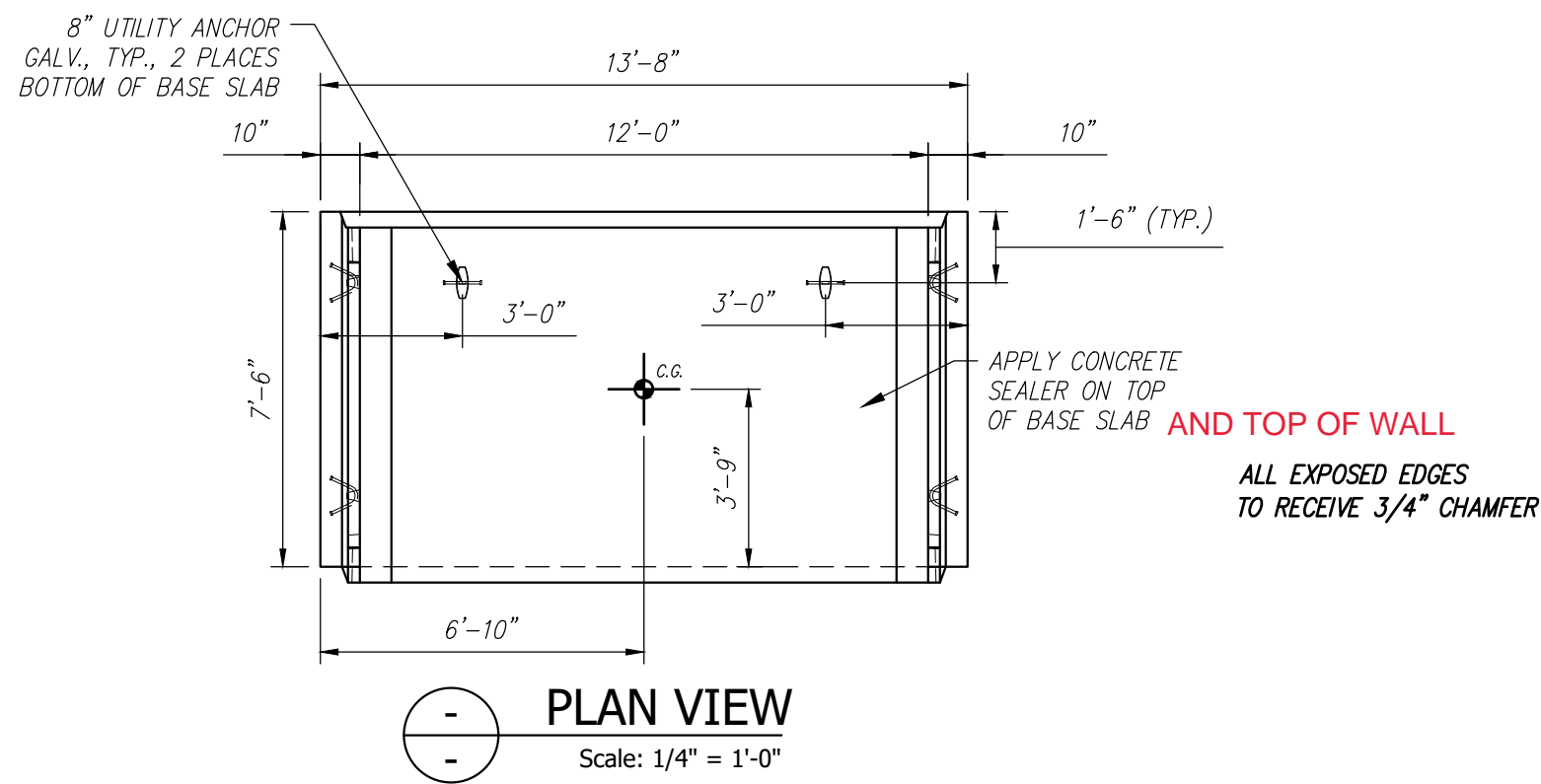
MK C  
4X8 W8XW4

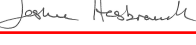
MK 503  
#5 BAR

[illegible]

D8 - BILL OF MATERIALS / EMBEDS				
CSI ID#	DESCRIPTION	QTY	UM	COMMENTS
DTJ	CERTI-VEX PENSEAL 244-100%	1.6	GA	
EM-00125	BOLT POCKET PLATES (GALVANIZED)	8	EA	
EM-00115	8" UTILITY ANCHOR -GALVANIZED	6	EA	
JS-00002	1"X1"CLOSED NEOP GASKET	27.83	FT	AROUND BELL
RM-00013	REBAR #4 BLACK- GR 60	88	LB	
RM-00015	REBAR #5 BLACK-GR 60 40'	748	LB	
RM-00098	WIRE MESH ALL SIZES	748	LB	TOTAL WEIGHT
MX-FA5000SC30	MIX DESIGN - FLY ASH 5000 SELF COMPACTIN	6.65	CY	

Rebar Schedule		
MK	QTY	LENGTH
401 #4	11	12'-0"
501 #5	30	10'-6"
503 #5	16	3'-0"

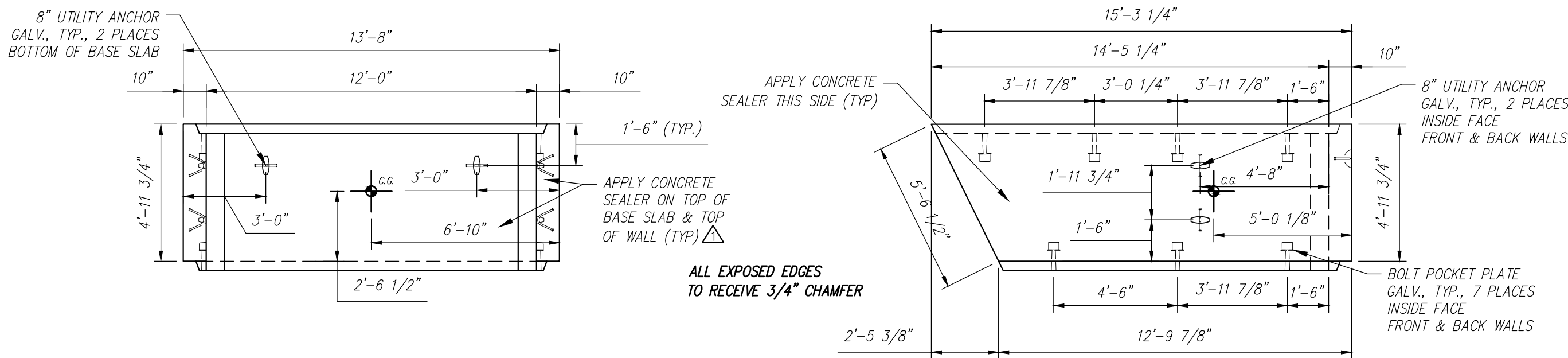


STATE OF MAINE	
DEPARTMENT OF TRANSPORTATION	
<input type="checkbox"/> REVIEWED	<input checked="" type="checkbox"/> REVIEWED WITH COMMENTS
<input type="checkbox"/> REJECTED	<input type="checkbox"/> REVISE AND RESUBMIT
Sep 22, 2021	
THIS DOCUMENT WAS REVIEWED IN ACCORDANCE WITH STATE OF MAINE SPECIFICATION SECTION 160.7 WORKING DRAWINGS	
	Transportation Engineer II
NAME	TITLE

Contractor is to verify that all information shown on drawings has been thoroughly checked, complies with the contract documents and is adequate to meet the field conditions. Some dimensions and details may differ slightly from contract drawings to accommodate the manufacturing or design process. Approval of this drawing indicates that any deviation from the contract documents has been reviewed and found to be acceptable. Production will not commence until receipt of signed, approved shop drawings.		10			
		9			
This drawing contains information proprietary to CONCRETE SYSTEMS, INC. This drawing is disclosed with the understanding that it will be retained in confidence and its use limited solely to the purpose for which it is disclosed. It is understood that no reproduction of this drawing is authorized without permission from CONCRETE SYSTEMS, INC. and that it will be returned to CONCRETE SYSTEMS, INC. upon request.		8			
		7			
FEDERAL AID PROJECT NO. 1891500	This drawing is based upon information provided from the following documents and/or sources: Engineer: MEDOT Project No: N/A Drawings: SNOW SLED BRIDGE SHEET 5 OF 7 Specifications: SPECIAL PROVISION SECTION 534 PRECAST STRUCTURAL CONCRETE Other Sources: N/A	6			
		5			
		4			
		3			
		2			
		1	09/15/2021	REVISED REINFORCING	YAA
		Rev.	Date	DESCRIPTION	By
		REVISIONS			
Concrete Systems Inc. 9 Commercial St., Hudson, NH 03051 Phone 603-889-4163 Fax 603-889-2417		STATE AGENCY MEDOT		STATE OF MAINE SNOW SLED BRIDGE BREWER - EDDINGTON, ME	
Drawn By YAA Reviewed By YAA Approved By		Date 08/13/2021 Date 08/18/2021 Date		D Drawing No. INDIVIDUAL PIECE SHOP DRAWING D8 C24548-D8	
Quantity: 1		Project No: WIN 018915.50		REV 1	
SHEET 12		OF 16			

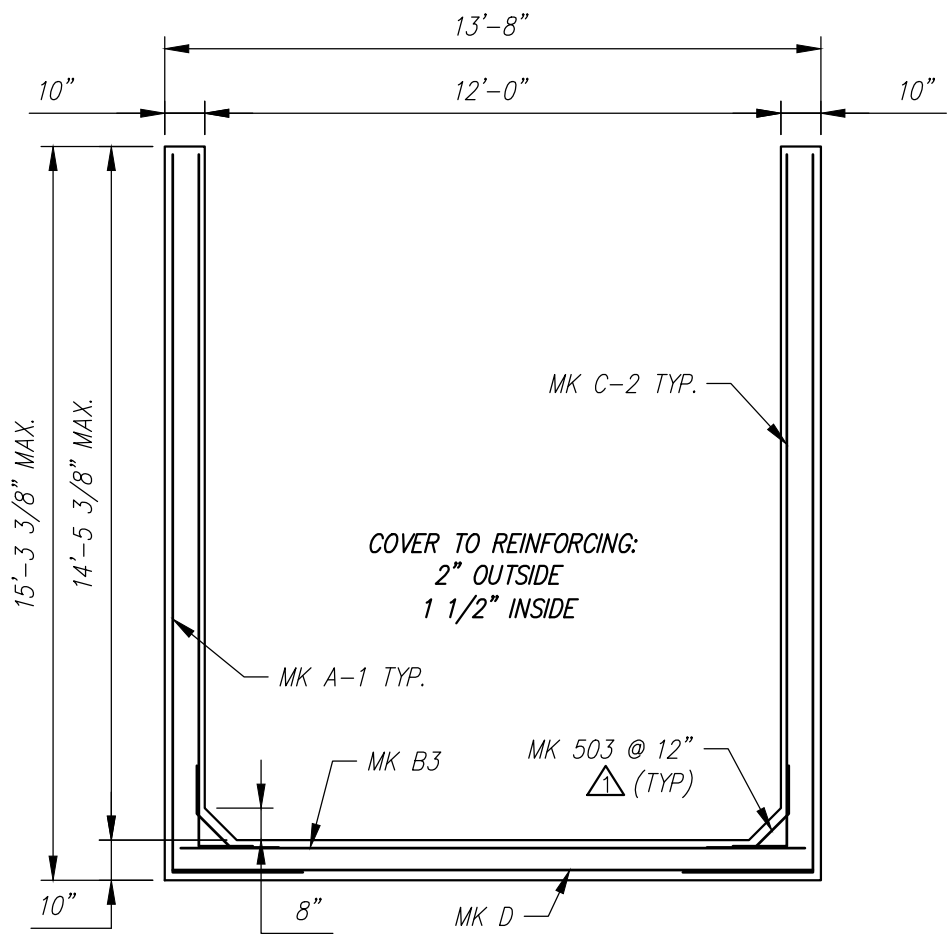
D9 - BILL OF MATERIALS / EMBEDS				
CSI ID#	DESCRIPTION	QTY	UM	COMMENTS
DTJ	CERTI-VEX PENSEAL 244-100%	1.5	GA	
EM-00125	BOLT POCKET PLATES (GALVANIZED)	14	EA	
EM-00115	8" UTILITY ANCHOR -GALVANIZED	6	EA	
JS-00002	1"X1"CLOSED NEOP GASKET	44.17	FT	AROUND BELL
RM-00015	REBAR #5 BLACK-GR 60 40'	31	LB	
RM-00017	REBAR #6 BLACK-GR 60 40'	592	LB	
RM-00098	WIRE MESH ALL SIZES	988	LB	TOTAL WEIGHT
MX-FA5000SC30	MIX DESIGN - FLY ASH 5000 SELF COMPACTIN	6.25	CY	

Rebar Schedule			
MARK	QTY	LENGTH	
503 #5	10	3	0 "
604 #6	22	17	11 " MAX.

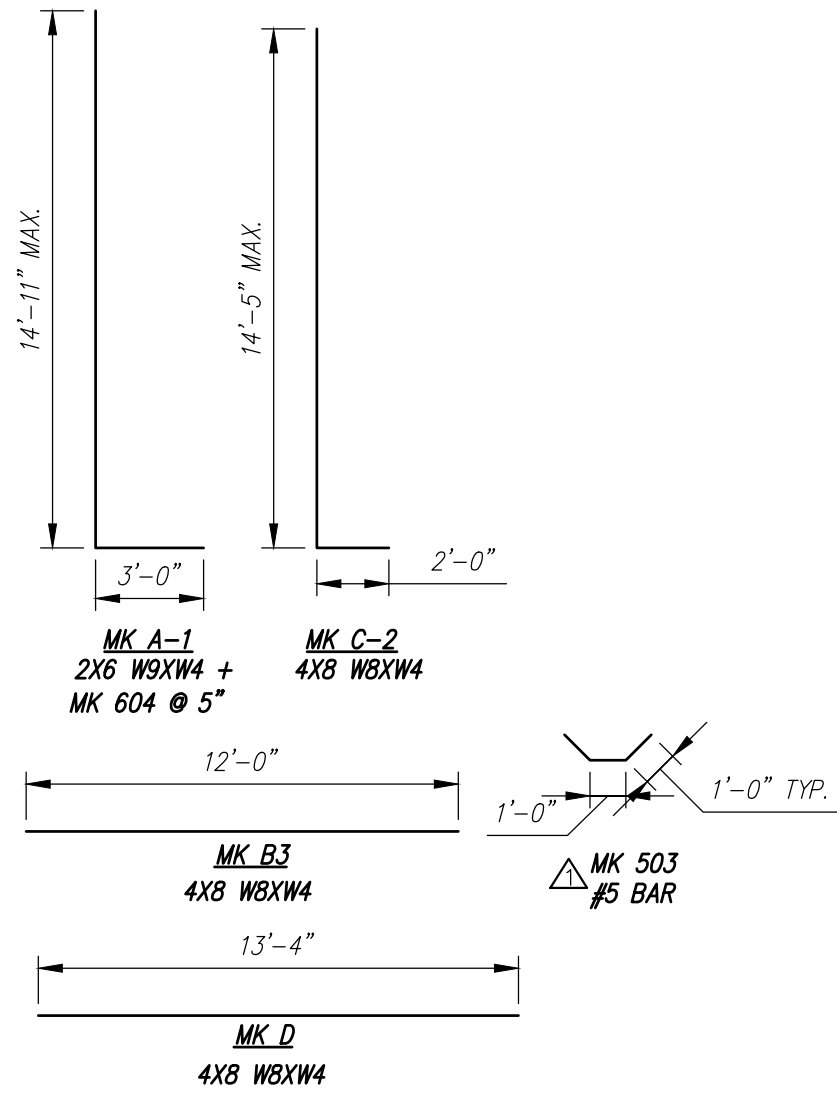


PLAN VIEW  
Scale: 1/4" = 1'-0"

SIDE VIEW  
Scale: 1/4" = 1'-0"



REINFORCING DETAIL  
Scale: 1/4" = 1'-0"



BENDING SCHEDULE  
Scale: N.T.S.

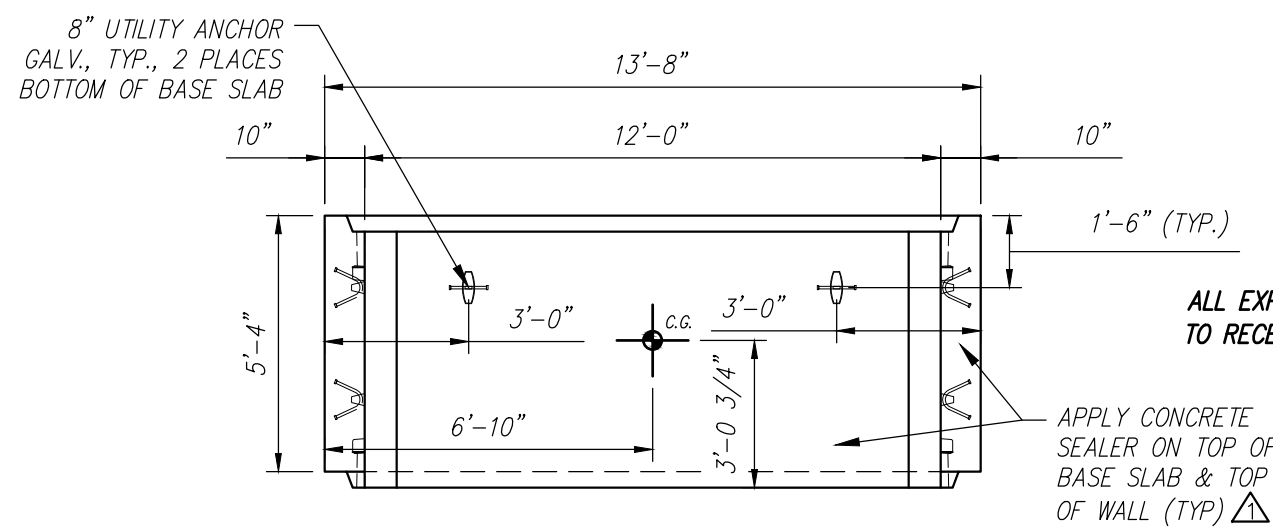
STATE OF MAINE DEPARTMENT OF TRANSPORTATION	
<input checked="" type="checkbox"/> REVIEWED	<input type="checkbox"/> REVIEWED WITH COMMENTS
<input type="checkbox"/> REJECTED	<input type="checkbox"/> REVISE AND RESUBMIT
Sep 22, 2021	
THIS DOCUMENT WAS REVIEWED IN ACCORDANCE WITH STATE OF MAINE SPECIFICATION SECTION 165.7 WORKING DRAWINGS	
NAME	TITLE

Contractor is to verify that all information shown on drawings has been thoroughly checked, complies with the contract documents and is adequate to meet the field conditions. Some dimensions and details may differ slightly from contract drawings to accommodate the manufacturing or design process. Approval of this drawing indicates that any deviation from the contract documents has been reviewed and found to be acceptable. Production will not commence until receipt of signed, approved shop drawings.		10																																																																																																																																																																																																																																																																																																																																																																																																																																																																																																																																																																																																																																																																																																																																																																																																																																																																																																																																																																																																																																																																																																																																																																																																																																																																																																																																																																																																																																																																																																																																																																																																																																																											
---	--	----	--	--	--	--	--	--	--	--	--	--	--	--	--	--	--	--	--	--	--	--	--	--	--	--	--	--	--	--	--	--	--	--	--	--	--	--	--	--	--	--	--	--	--	--	--	--	--	--	--	--	--	--	--	--	--	--	--	--	--	--	--	--	--	--	--	--	--	--	--	--	--	--	--	--	--	--	--	--	--	--	--	--	--	--	--	--	--	--	--	--	--	--	--	--	--	--	--	--	--	--	--	--	--	--	--	--	--	--	--	--	--	--	--	--	--	--	--	--	--	--	--	--	--	--	--	--	--	--	--	--	--	--	--	--	--	--	--	--	--	--	--	--	--	--	--	--	--	--	--	--	--	--	--	--	--	--	--	--	--	--	--	--	--	--	--	--	--	--	--	--	--	--	--	--	--	--	--	--	--	--	--	--	--	--	--	--	--	--	--	--	--	--	--	--	--	--	--	--	--	--	--	--	--	--	--	--	--	--	--	--	--	--	--	--	--	--	--	--	--	--	--	--	--	--	--	--	--	--	--	--	--	--	--	--	--	--	--	--	--	--	--	--	--	--	--	--	--	--	--	--	--	--	--	--	--	--	--	--	--	--	--	--	--	--	--	--	--	--	--	--	--	--	--	--	--	--	--	--	--	--	--	--	--	--	--	--	--	--	--	--	--	--	--	--	--	--	--	--	--	--	--	--	--	--	--	--	--	--	--	--	--	--	--	--	--	--	--	--	--	--	--	--	--	--	--	--	--	--	--	--	--	--	--	--	--	--	--	--	--	--	--	--	--	--	--	--	--	--	--	--	--	--	--	--	--	--	--	--	--	--	--	--	--	--	--	--	--	--	--	--	--	--	--	--	--	--	--	--	--	--	--	--	--	--	--	--	--	--	--	--	--	--	--	--	--	--	--	--	--	--	--	--	--	--	--	--	--	--	--	--	--	--	--	--	--	--	--	--	--	--	--	--	--	--	--	--	--	--	--	--	--	--	--	--	--	--	--	--	--	--	--	--	--	--	--	--	--	--	--	--	--	--	--	--	--	--	--	--	--	--	--	--	--	--	--	--	--	--	--	--	--	--	--	--	--	--	--	--	--	--	--	--	--	--	--	--	--	--	--	--	--	--	--	--	--	--	--	--	--	--	--	--	--	--	--	--	--	--	--	--	--	--	--	--	--	--	--	--	--	--	--	--	--	--	--	--	--	--	--	--	--	--	--	--	--	--	--	--	--	--	--	--	--	--	--	--	--	--	--	--	--	--	--	--	--	--	--	--	--	--	--	--	--	--	--	--	--	--	--	--	--	--	--	--	--	--	--	--	--	--	--	--	--	--	--	--	--	--	--	--	--	--	--	--	--	--	--	--	--	--	--	--	--	--	--	--	--	--	--	--	--	--	--	--	--	--	--	--	--	--	--	--	--	--	--	--	--	--	--	--	--	--	--	--	--	--	--	--	--	--	--	--	--	--	--	--	--	--	--	--	--	--	--	--	--	--	--	--	--	--	--	--	--	--	--	--	--	--	--	--	--	--	--	--	--	--	--	--	--	--	--	--	--	--	--	--	--	--	--	--	--	--	--	--	--	--	--	--	--	--	--	--	--	--	--	--	--	--	--	--	--	--	--	--	--	--	--	--	--	--	--	--	--	--	--	--	--	--	--	--	--	--	--	--	--	--	--	--	--	--	--	--	--	--	--	--	--	--	--	--	--	--	--	--	--	--	--	--	--	--	--	--	--	--	--	--	--	--	--	--	--	--	--	--	--	--	--	--	--	--	--	--	--	--	--	--	--	--	--	--	--	--	--	--	--	--	--	--	--	--	--	--	--	--	--	--	--	--	--	--	--	--	--	--	--	--	--	--	--	--	--	--	--	--	--	--	--	--	--	--	--	--	--	--	--	--	--	--	--	--	--	--	--	--	--	--	--	--	--	--	--	--	--	--	--	--	--	--	--	--	--	--	--	--	--	--	--	--	--	--	--	--	--	--	--	--	--	--	--	--	--	--	--	--	--	--	--	--	--	--	--	--	--	--	--	--	--	--	--	--	--	--	--	--	--	--	--	--	--	--	--	--	--	--	--	--	--	--	--	--	--	--	--	--	--	--	--	--	--	--	--	--	--	--	--	--	--	--	--	--	--	--	--	--	--	--	--	--	--	--	--	--	--	--	--	--	--	--	--	--	--	--	--	--	--	--	--	--	--	--	--	--	--	--	--	--	--	--	--	--	--	--	--	--	--	--	--	--	--	--	--	--	--	--	--	--	--	--	--	--	--	--	--	--	--	--	--	--	--	--	--	--	--	--	--	--	--	--	--	--	--	--	--	--	--	--	--	--	--	--	--	--	--	--	--	--	--	--	--	--	--	--	--	--	--	--	--	--	--	--	--	--	--	--	--	--	--	--	--	--	--	--	--	--	--	--	--	--	--	--	--	--	--	--	--	--	--	--	--	--	--	--	--	--	--	--	--	--	--	--	--	--	--	--	--	--	--	--	--	--	--	--	--	--	--	--	--	--	--	--	--	--	--	--	--	--	--	--	--	--	--	--	--	--	--	--	--	--	--	--	--	--	--	--	--	--	--	--	--	--	--	--	--	--	--	--	--	--	--	--	--	--	--	--	--	--	--	--	--	--	--	--	--	--	--	--	--	--	--	--	--	--	--	--	--	--	--	--	--	--	--	--	--	--	--	--	--	--	--	--	--	--	--	--	--	--	--	--	--	--	--	--	--	--	--	--	--	--	--	--	--	--	--	--	--	--	--	--	--	--	--	--	--	--	--	--	--	--	--	--	--	--	--	--	--	--	--	--	--	--	--	--	--	--	--	--	--	--	--	--	--	--	--	--	--	--	--	--	--	--	--	--	--	--	--	--	--	--	--	--	--	--	--	--	--	--	--	--	--	--	--	--	--	--	--	--	--	--	--	--	--	--	--	--	--	--	--	--	--	--	--	--	--	--	--	--	--	--	--	--	--	--	--	--	--	--	--	--	--	--	--	--	--	--	--	--	--	--	--	--	--	--	--	--	--	--	--	--	--	--	--	--	--	--	--	--	--	--	--	--	--	--	--	--	--	--	--	--	--	--	--	--	--	--	--	--	--	--	--	--	--	--	--	--	--	--	--	--	--	--	--	--	--	--	--	--	--	--	--	--	--	--	--	--	--	--	--	--	--	--	--	--	--	--	--	--	--	--	--	--	--	--	--	--	--	--	--	--	--	--	--	--	--	--	--	--	--	--	--	--	--	--	--	--	--	--	--	--	--	--	--	--	--	--	--	--	--	--	--	--	--	--	--	--	--	--	--	--	--	--	--	--	--	--	--	--	--	--	--	--	--	--	--	--	--	--	--	--	--	--	--	--	--	--	--	--	--	--	--	--	--	--	--	--	--	--	--	--	--	--	--	--	--	--	--	--	--	--	--	--	--	--	--	--	--	--	--	--	--	--	--	--	--	--	--	--	--	--	--	--	--	--	--	--	--	--	--	--	--	--	--	--	--	--	--	--	--	--	--	--	--	--	--	--	--	--	--	--	--	--	--	--	--	--	--	--	--	--	--	--	--	--	--	--	--	--	--	--	--	--	--	--	--	--	--	--	--	--	--	--	--	--	--	--	--

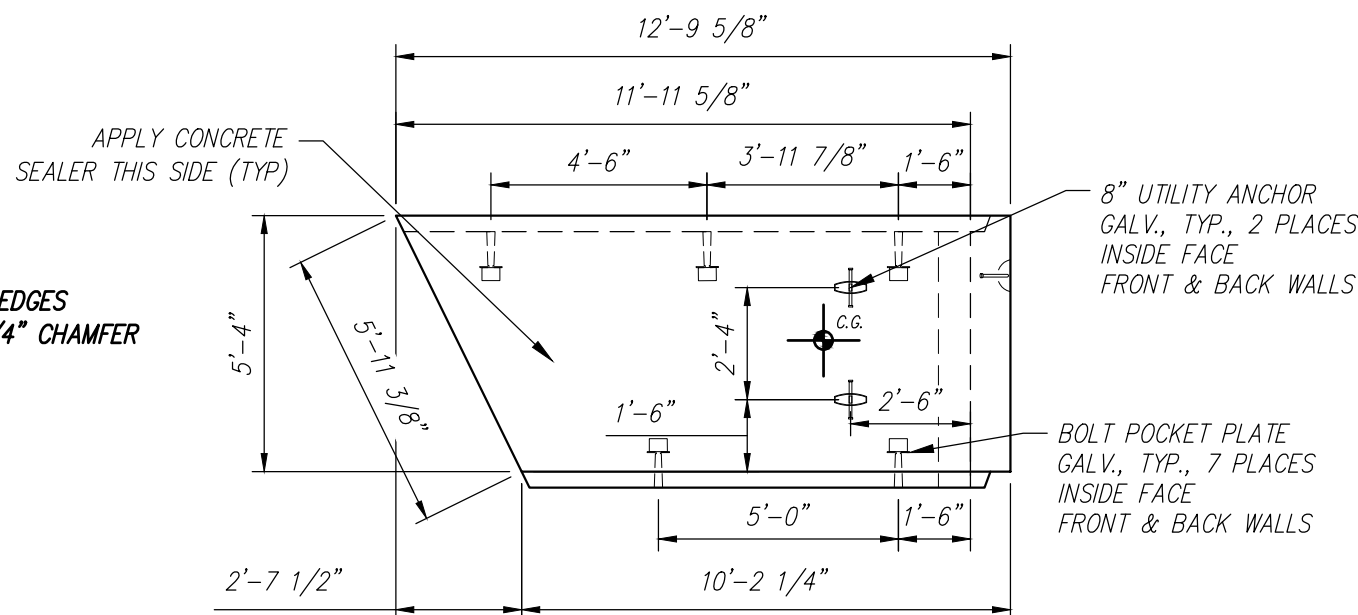


D10 - BILL OF MATERIALS / EMBEDS				
CSI ID#	DESCRIPTION	QTY	UM	COMMENTS
DTJ	CERTI-VEX PENSEAL 244-100%	1.4	GA	
EM-00125	BOLT POCKET PLATES (GALVANIZED)	10	EA	
EM-00115	8" UTILITY ANCHOR - GALVANIZED	6	EA	
JS-00002	1"X1"CLOSED NEOP GASKET	39.17	FT	AROUND BELL
RM-00015	REBAR #5 BLACK-GR 60 40"	38	LB	
RM-00017	REBAR #6 BLACK-GR 60 40"	556	LB	
RM-00098	WIRE MESH ALL SIZES	875	LB	TOTAL WEIGHT
MX-FA5000SC30	MIX DESIGN - FLY ASH 5000 SELF COMPACTIN	5.84	CY	

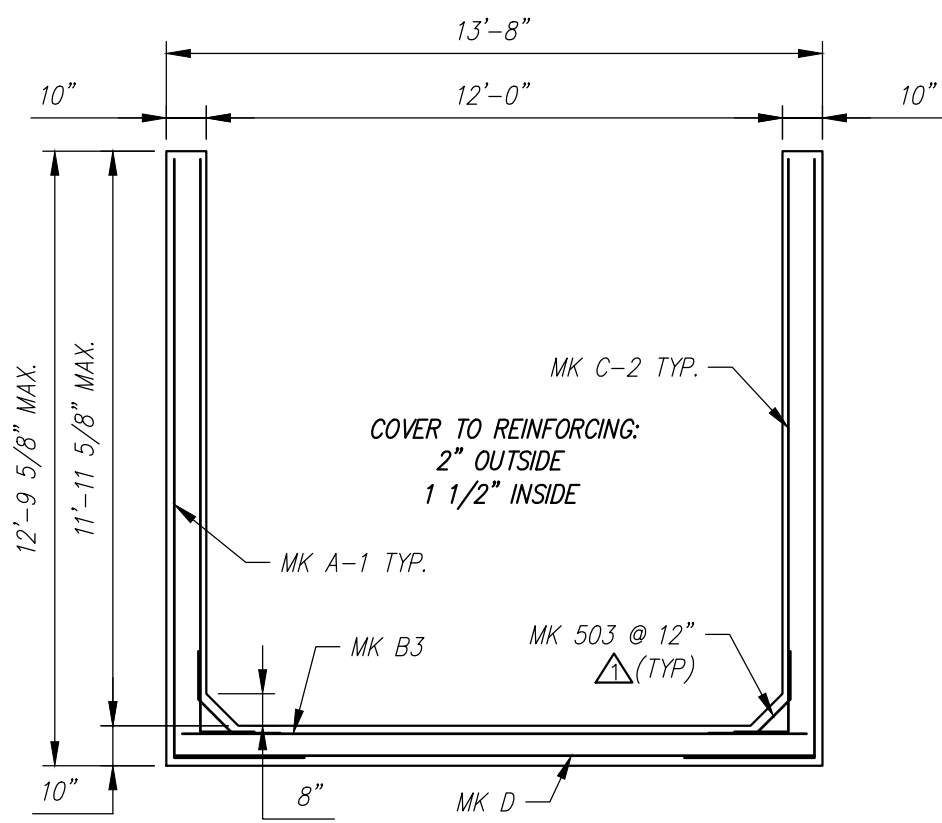
Rebar Schedule			
MK	QTY	LENGTH	
503 #5	12	3	0 "
603 #6	24	15	5 " MAX.



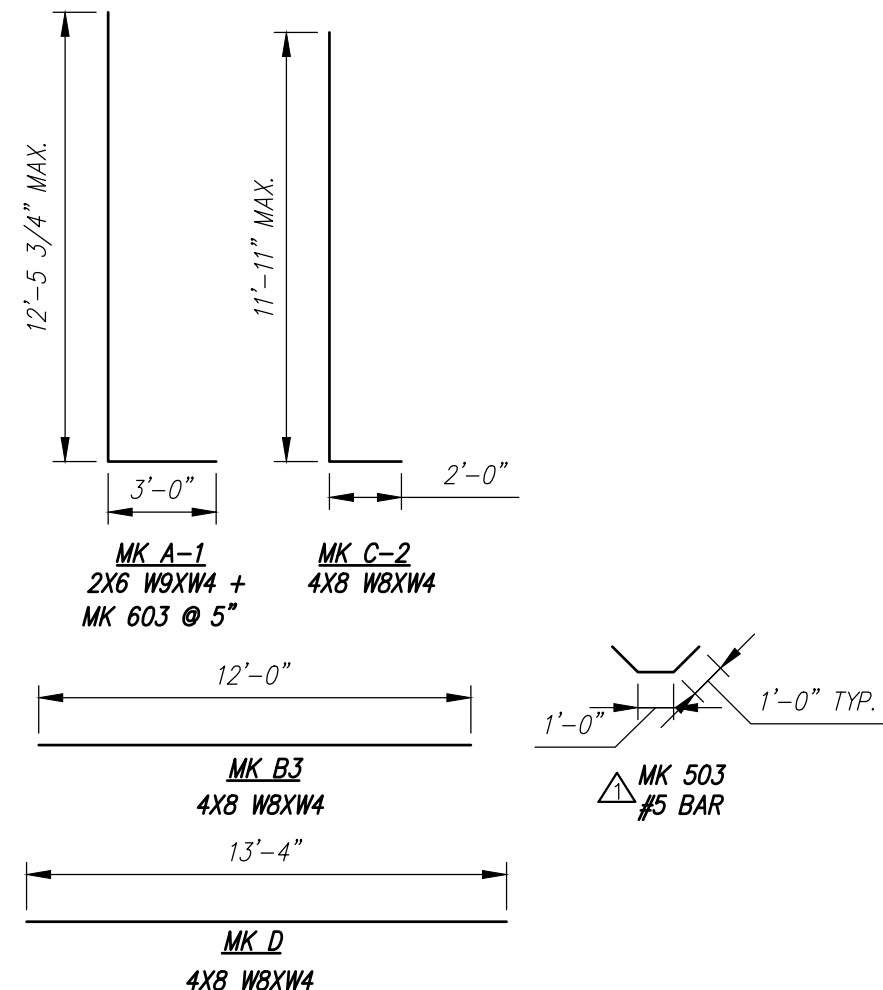
PLAN VIEW  
Scale: 1/4" = 1'-0"



SIDE VIEW  
Scale: 1/4" = 1'-0"




REINFORCING DETAIL  
Scale: 1/4" = 1'-0"



BENDING SCHEDULE  
Scale: N.T.S.

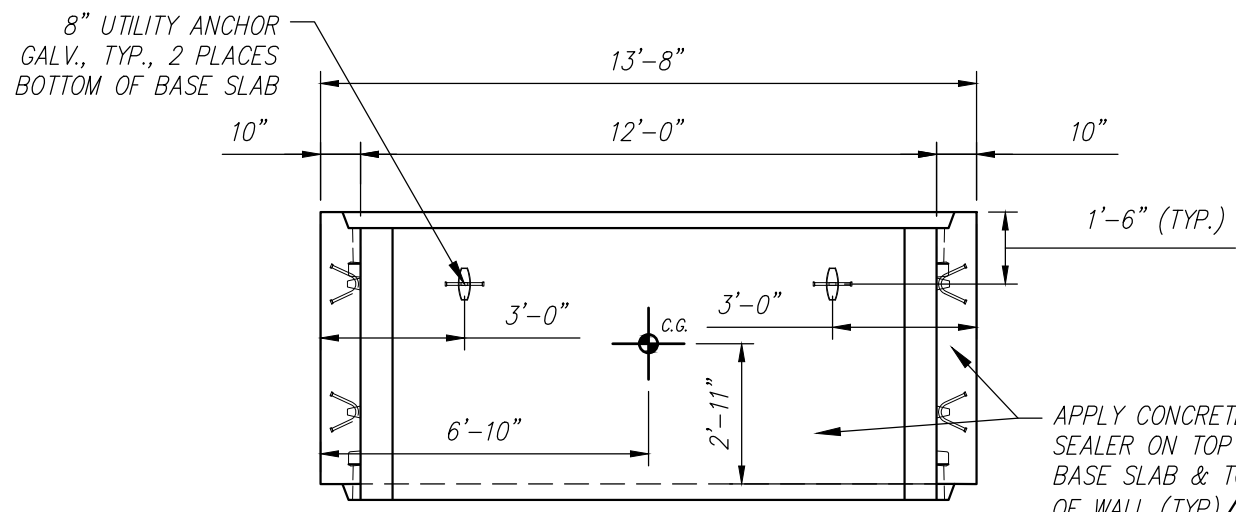
STATE OF MAINE DEPARTMENT OF TRANSPORTATION	
<input checked="" type="checkbox"/> REVIEWED	<input type="checkbox"/> REVIEWED WITH COMMENTS
<input type="checkbox"/> REJECTED	<input type="checkbox"/> REVISE AND RESUBMIT
Sep 22, 2021	
THIS DOCUMENT WAS REVIEWED IN ACCORDANCE WITH STATE OF MAINE SPECIFICATION SECTION 106.7 WORKING DRAWINGS	
	Transportation Engineer II
NAME	TITLE

Contractor is to verify that all information shown on drawings has been thoroughly checked, complies with the contract documents and is adequate to meet the field conditions. Some dimensions and details may differ slightly from contract drawings to accommodate the manufacturing or design process. Approval of this drawing indicates that any deviation from the contract documents has been reviewed and found to be acceptable. Production will not commence until receipt of signed, approved shop drawings.		10				This drawing is based upon information provided from the following documents and/or sources: Engineer: MEDOT Project No: N/A Drawings: SNOW SLED BRIDGE Specifications: SHEET 5 OF 7 SPECIAL PROVISION SECTION 534 PRECAST STRUCTURAL CONCRETE Other Sources: N/A	 Concrete Systems Inc. 9 Commercial St., Hudson, NH,03051 Phone 603-889-4163 Fax 603-889-2417	STATE AGENCY		STATE OF MAINE SNOW SLED BRIDGE BREWER — EDDINGTON, ME			
		9						MEDOT					
		8						Drawn By YAA	Date 08/13/2021	D	INDIVIDUAL PIECE SHOP DRAWING D10 Drawing No. C24548-D10		REV 1
		7						Reviewed By YAA	Date 08/18/2021				
		6						Approved By	Date				
5				Quantity: 1				Project No: WIN 018915.50		SHEET 14 OF 16			
4													
3													
2													
1	09/15/2021	REVISED REINFORCING	YAA										
Rev.	Date	DESCRIPTION	By										
REVISIONS													

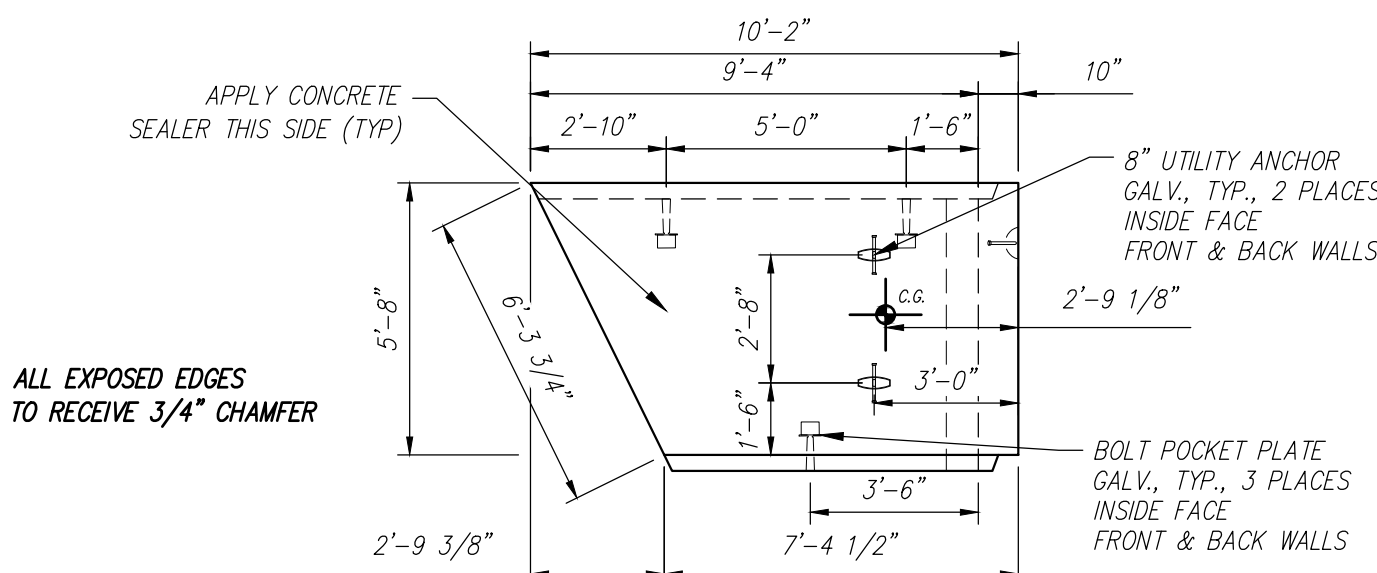
FEDERAL AID PROJECT NO. 1891500

D11 - BILL OF MATERIALS / EMBEDS				
CSI ID#	DESCRIPTION	QTY	UM	COMMENTS
DTJ	CERTI-VEX PENSEAL 244-100%	1.3	GA	
EM-00125	BOLT POCKET PLATES (GALVANIZED)	6	EA	
EM-00115	8" UTILITY ANCHOR - GALVANIZED	6	EA	
JS-00002	1"X1"CLOSED NEOP GASKET	34	FT	AROUND BELL
RM-00015	REBAR #5 BLACK-GR 60 40"	38	LB	
RM-00017	REBAR #6 BLACK-GR 60 40"	501	LB	
RM-00098	WIRE MESH ALL SIZES	754	LB	TOTAL WEIGHT
MX-FA5000SC30	MIX DESIGN - FLY ASH 5000 SELF COMPACTIN	5.26	CY	

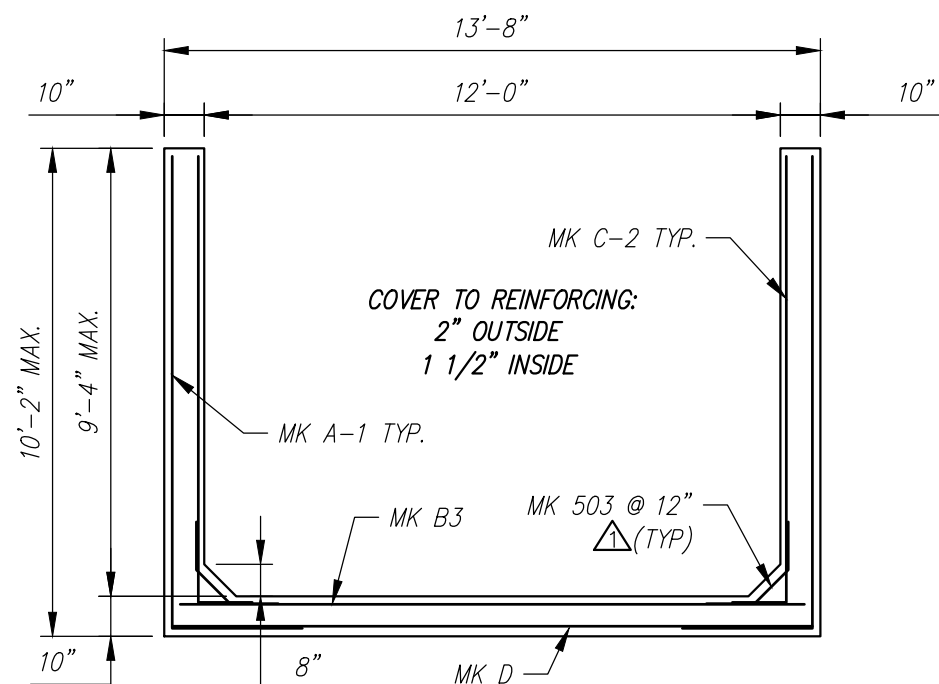
Rebar Schedule			
MK	QTY	LENGTH	
503 #5	12	3	0 "
602 #6	26	12	10 " MAX.



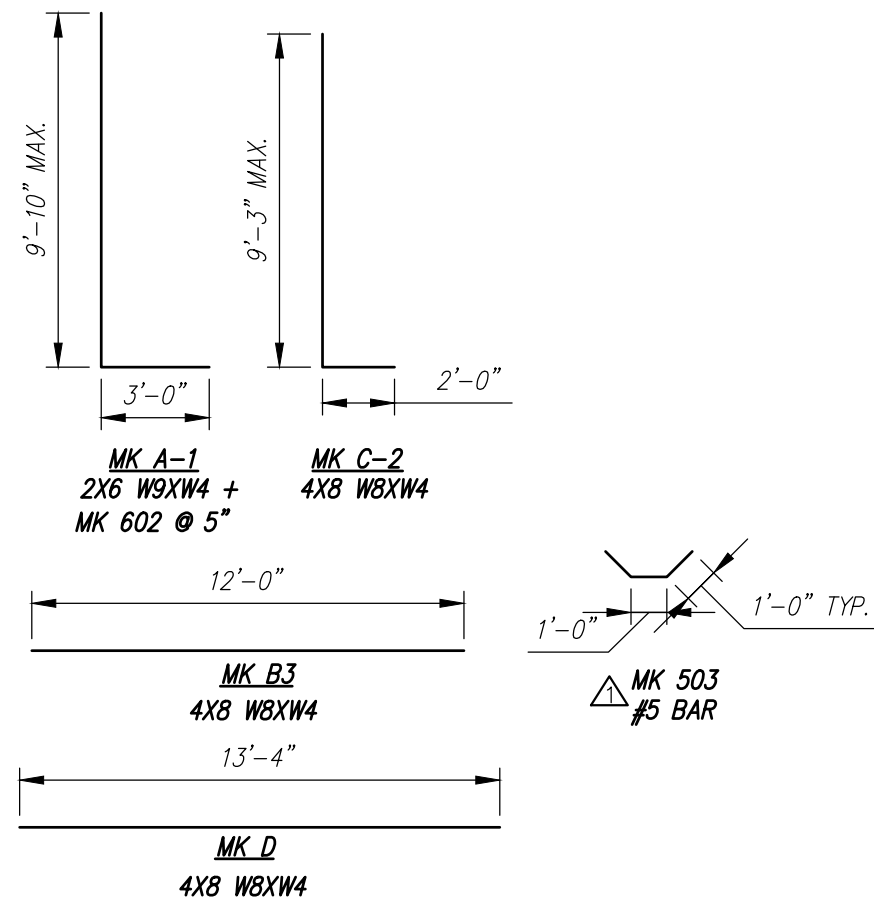
PLAN VIEW  
Scale: 1/4" = 1'-0"



SIDE VIEW  
Scale: 1/4" = 1'-0"




REINFORCING DETAIL  
Scale: 1/4" = 1'-0"



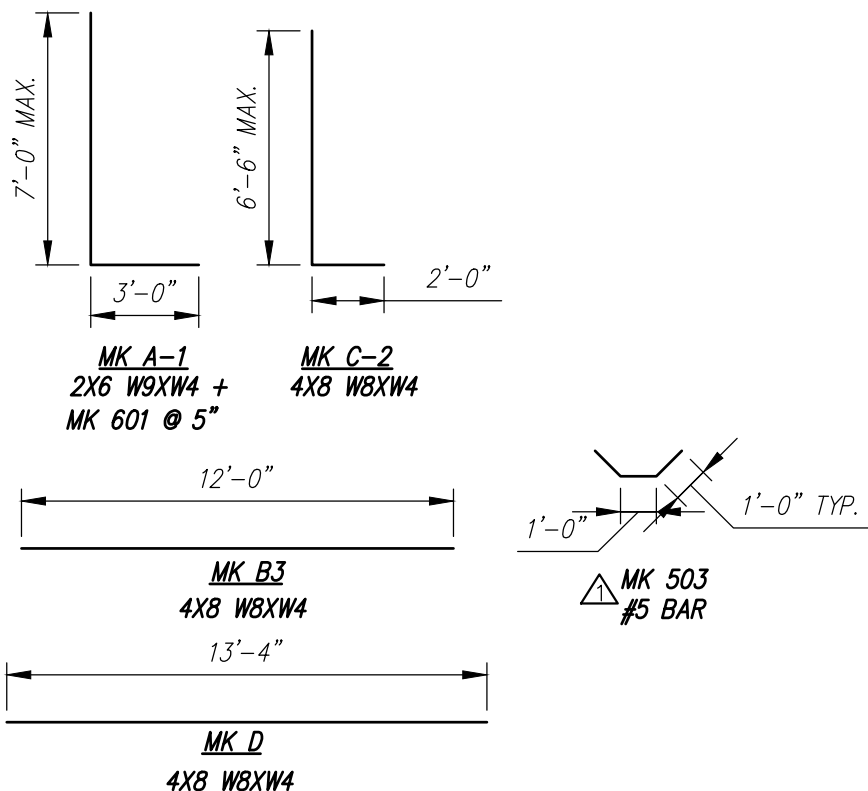
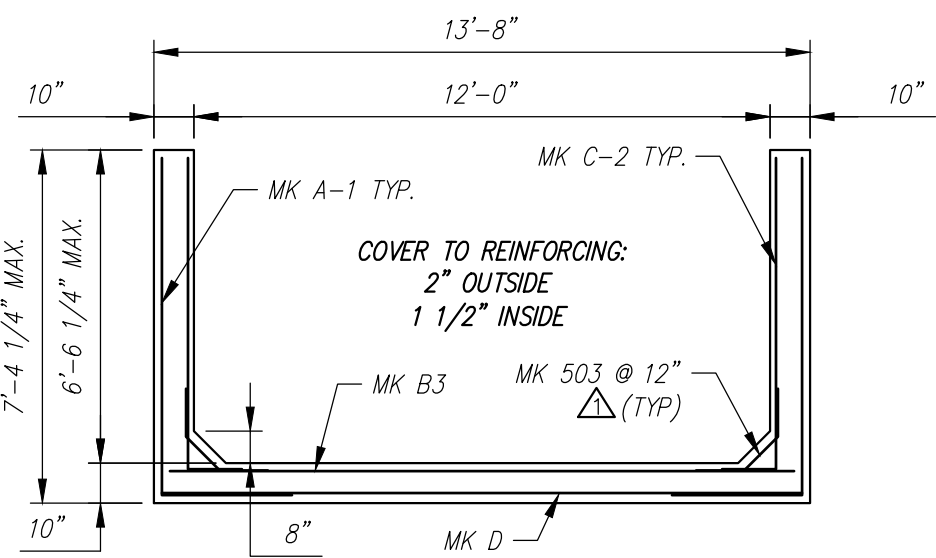
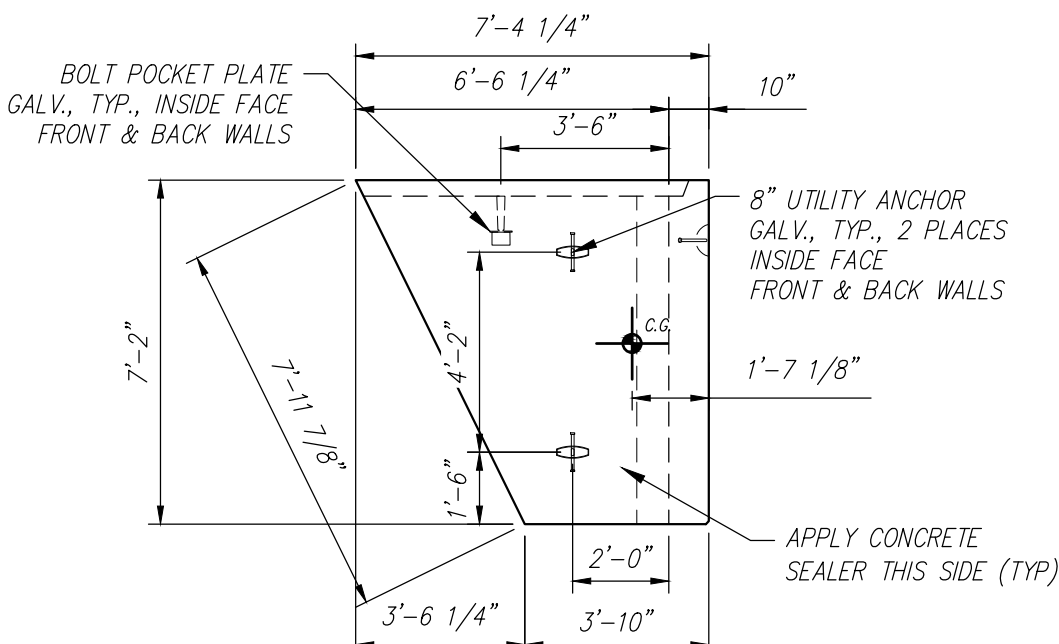
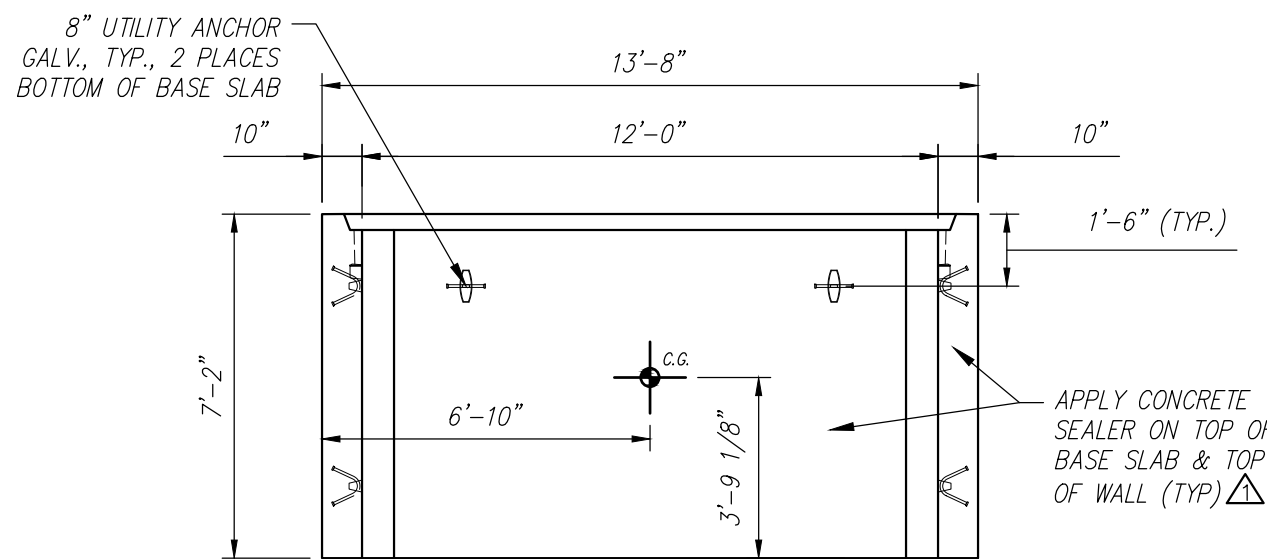
BENDING SCHEDULE  
Scale: N.T.S.

STATE OF MAINE DEPARTMENT OF TRANSPORTATION	
<input checked="" type="checkbox"/> REVIEWED	<input type="checkbox"/> REVIEWED WITH COMMENTS
<input type="checkbox"/> REJECTED	<input type="checkbox"/> REVISE AND RESUBMIT
Sep 22, 2021	
THIS DOCUMENT WAS REVIEWED IN ACCORDANCE WITH STATE OF MAINE SPECIFICATION SECTION 105.7 WORKING DRAWINGS	
NAME	TITLE

Contractor is to verify that all information shown on drawings has been thoroughly checked, complies with the contract documents and is adequate to meet the field conditions. Some dimensions and details may differ slightly from contract drawings to accommodate the manufacturing or design process. Approval of this drawing indicates that any deviation from the contract documents has been reviewed and found to be acceptable. Production will not commence until receipt of signed, approved shop drawings.		10				This drawing is based upon information provided from the following documents and/or sources: Engineer: MEDOT Project No: N/A Drawings: SNOW SLED BRIDGE Specifications: SHEET 5 OF 7 SPECIAL PROVISION SECTION 534 PRECAST STRUCTURAL CONCRETE Other Sources: N/A		STATE AGENCY		STATE OF MAINE SNOW SLED BRIDGE BREWER — EDDINGTON, ME			
		9						MEDOT					
		8						Drawn By YAA	Date 08/13/2021	D	Drawing No. INDIVIDUAL PIECE SHOP DRAWING D11 C24548—D11	REV 1	
		7						Reviewed By YAA	Date 08/18/2021				
		6						Approved By	Date				
5				Quantity: 1				Project No: WIN 018915.50		SHEET 15 OF 16			
4													
3													
This drawing contains information proprietary to CONCRETE SYSTEMS, INC. This drawing is disclosed with the understanding that it will be retained in confidence and its use limited solely to the purpose for which it is disclosed. It is understood that no reproduction of this drawing is authorized without permission from CONCRETE SYSTEMS, INC. and that it will be returned to CONCRETE SYSTEMS, INC. upon request.		2				YAA							
		1	09/15/2021	REVISED REINFORCING									
Rev.		Date	DESCRIPTION		By								
		REVISIONS											

D12 - BILL OF MATERIALS / EMBEDS				
CSI ID#	DESCRIPTION	QTY	UM	COMMENTS
DTJ	CERTI-VEX PENSEAL 244-100%	1.3	GA	
EM-00125	BOLT POCKET PLATES (GALVANIZED)	2	EA	
EM-00033	3" FOAM CORE PVC	5.83	FT	
EM-00115	8" UTILITY ANCHOR -GALVANIZED	6	EA	
JS-00002	1"X1"CLOSED NEOP GASKET	28.33	FT	AROUND BELL
RM-00015	REBAR #5 BLACK-GR 60 40'	44	LB	
RM-00017	REBAR #6 BLACK-GR 60 40'	511	LB	
RM-00098	WIRE MESH ALL SIZES	625	LB	TOTAL WEIGHT
MX-FA5000SC30	MIX DESIGN - FLY ASH 5000 SELF COMPACTIN	5.07	CY	

Rebar Schedule			
MK	QTY	LENGTH	
503 #5	14	3' - 0"	
601 #6	34	10' - 0" MAX.	



STATE OF MAINE  
DEPARTMENT OF TRANSPORTATION

☒ REVIEWED  
☐ REJECTED

☐ REVIEWED WITH COMMENTS  
☐ REVISE AND RESUBMIT

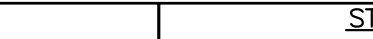
Sep 22, 2021

THIS DOCUMENT WAS REVIEWED IN ACCORDANCE WITH STATE  
OF MAINE SPECIFICATION SECTION 105.7 WORKING DRAWINGS

NAME

TITLE

Transportation Engineer II

Contractor is to verify that all information shown on drawings has been thoroughly checked, complies with the contract documents and is adequate to meet the field conditions. Some dimensions and details may differ slightly from contract drawings to accommodate the manufacturing or design process. Approval of this drawing indicates that any deviation from the contract documents has been reviewed and found to be acceptable. Production will not commence until receipt of signed, approved shop drawings.	This drawing contains information proprietary to CONCRETE SYSTEMS, INC. This drawing is disclosed with the understanding that it will be retained in confidence and its use limited solely to the purpose for which it is disclosed. It is understood that no reproduction of this drawing is authorized without permission from CONCRETE SYSTEMS, INC. and that it will be returned to CONCRETE SYSTEMS, INC. upon request.	10				This drawing is based upon information provided from the following documents and/or sources:  Engineer: MEDOT Project No: N/A Drawings: SNOW SLED BRIDGE SHEET 5 OF 7 Specifications: SPECIAL PROVISION SECTION 534 PRECAST STRUCTURAL CONCRETE Other Sources: N/A	 <b>Concrete Systems Inc.</b> 9 Commercial St., Hudson, NH, 03051 Phone 603-889-4163 Fax 603-889-2417	STATE AGENCY		FEDERAL AID PROJECT NO. 1891500						
		9						MEDOT		STATE OF MAINE SNOW SLED BRIDGE BREWER — EDDINGTON, ME						
		8						D		INDIVIDUAL PIECE SHOP DRAWING D12		REV 1				
		7								Drawing No. C24548-D12						
		6								Quantity: 1			Project No: WIN 018915.50		SHEET 16 OF 16	
		5														
		4														
		3														
		2														
		1	09/15/2021	REVISED REINFORCING & REMOVE 3"Ø HOLE IN BASE SLAB	YAA											
Rev.	Date	DESCRIPTION	By													
		REVISIONS														